



HED8型液—电压力继电器

HED8 HYDRAULIC—ELECTRIC TYPE PRESSURE SWITCH

(一) 功能说明

1、HED8型液—电压力继电器是柱塞式压力继电器。其组成主要包括阀体(1)带柱塞(2)的插件,压缩弹簧(3),调节件(4)和微动开关(5)。

2、被监控的压力作用在柱塞(2)上,此柱塞(2)压靠弹簧座(6),克服压缩弹簧(3)的连续可变的力。弹簧座(6)把柱塞(2)的运动传给开关(5)。于是使电路按设计要求接通或断开。

3、机械挡块保护开关(5)防止压力升高时损坏。

FUNCTION

1、The HED8 series hydraulic-electric pressure switch is a piston pressure switch .It is composed of bowl (1), insert of piston (2), spring (3). Adjuster (4) and micro-switch (5).

2、Controlled pressure is applied on the piston (2), and through the spring (3) the force transmits to the switch (5) . The electrical circuit will be turned on or off as designed in this time.

3、The machine dog protects the pressure switch from damage caused by over pressure.



(二)型号说明 MODEL CODE

- 不带泄油口 without release hole
- OH: 垂直叠加安装 plumb superposition connection
- OP: 油路块安装 plate connection
- OA: 管路安装 pipe connection
- 带泄油口 with release hole
- KP: 油路块安装 plate connection
- KA: 管路安装 pipe connection
- KH: 叠加安装 superposition connection
- LH: 垂直叠加安装 plumb superposition connection
- LP: 带泄油螺纹油口的油路块 plate connection with release hole of thread

10系列 Series
(10~19的安装尺寸保持一致)
(10-19 installation and connection dimensions remain the same)

注: 安装时要保证泄油口不得背压

HED8□10 / □□□□

其它细节用文字说明 Further details to be stated in text

省略: 不带锁 Omit if without lock

KS: 带锁 with lock

省略: 不带指示灯 Omit if without lamp

L24: 带24V指示灯 with lamp 24V

L220: 带220V指示灯 with lamp 220V

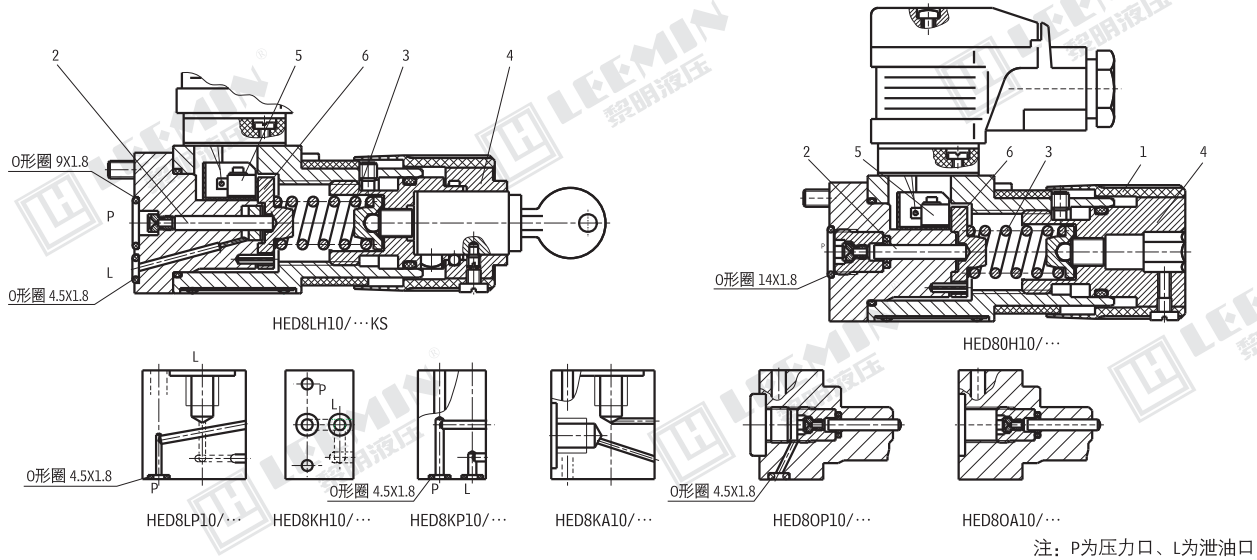
最高设定压力为 Max.adjustable pressure 5MPa=50bar

最高设定压力为 Max.adjustable pressure 10MPa=100bar

最高设定压力为 Max.adjustable pressure 20MPa=200bar

最高设定压力为 Max.adjustable pressure 35MPa=350bar

(三)剖面图



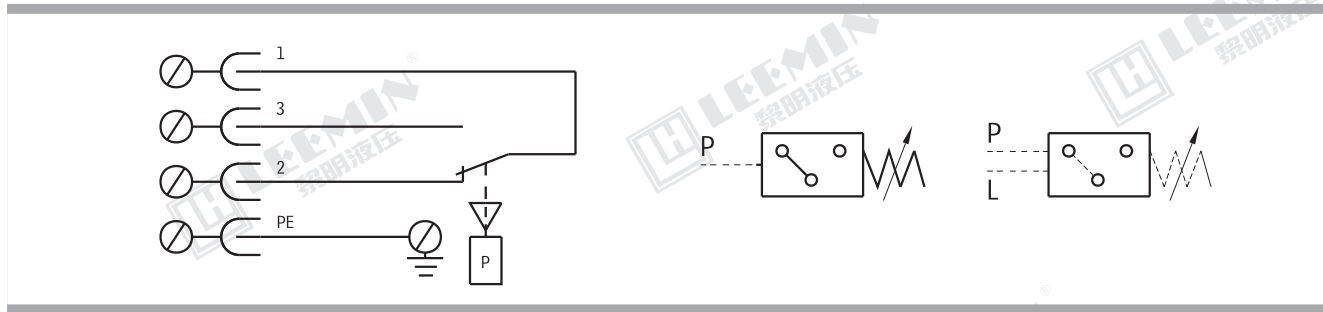


(四)技术参数 TECHNICAL DATA

使用介质 Medium	矿物油 Mineral oil	
温度范围 Temp range (°C)	-20 ~ +80	
粘度范围 Viscosity range (cst)	2.8 ~ 380	
切换精度 Change over accuracy	小于设定范围的 ±1% Less than setting up pressure ± 1%	
切换频率 Change over frequency	至 Up to 80 / min	
设定范围 Setting up range (单位 unit: MPa)		
额定压力 Rated pressure	最高工作压力 Max. pressure	设定范围 Setting up range
5	20	0.2 ~ 5
10	35	0.4 ~ 10
20	35	0.5 ~ 20
35	50	0.8 ~ 35
触点负载 Contacting load	AC 250V; 5A DC 5V; 1A; 250V; 0.02A	
绝缘按 Insulation as DIN 40050	IP65	

注: 为了延长此压力继电器的使用寿命, 应该安装成防止它受振动, 还应采取防止压力尖峰到达压力继电器

(五)终端接线符号 SYMBOL CONNECTOR WIRING



(六)压力降 PRESSURE LOSS 型号 HED80.10/...

