



清洗过滤装置

OIL FLUSHING UNIT SERIES

A: FE系列 < 适用于工程机械, 冶金行业, 油库 >

FE: Series < It's used for Machine - building industry, Metallurgical industry and Oil - stock. >

(一) 简介

我公司近年来不断开发了各类清洗装置, 具有外形美观、结构紧凑、使用方便、性能可靠、功能齐全、噪声低等优点。适用于各类液压系列生产厂家和用户清洗过滤液压系统在制造、装配及使用过程中生成的污染物, 减少系统因污染而造成的故障, 从而提高液压系统产品的可靠性和使用寿命。也可用于对工作油液进行定期维护过滤保证其油液的清洁度。也可过滤新油以便提高其清洁度等级或为系统注油。

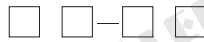
INTRODUCTION

All kinds of flushing unit series with beautiful shape, precise structure, used conveniently, reliable instinct, complete function, low noise and so on have been developed in our plant recent years. They are fit for hydraulic system's factories and customers who can flush pollution of hydraulic filters during manufacturing, installing and using. Therefore they can reduce the matters because of pollution, and increase the reliability and life-span of hydraulic system's products. OIL FLUSHING UNIT SERIES can also be used to prosecute periodic protection and ensure their flushing accuracy to working oil. Additional, they can flush new - oil so as to improve flushing accurate class or breathe into oil for the system.

(二) 型号说明

FFE 油路系统清洗过滤装置
Oil flushing unit series
DFFE 单筒油路清洗过滤装置
Single tank oil flushing unit series
CFE 液力传动清洗过滤装置
Hydrokinetic transmission cycle flushing unit series
KFFE 污染控制型过滤装置
Pollution Control flushing series

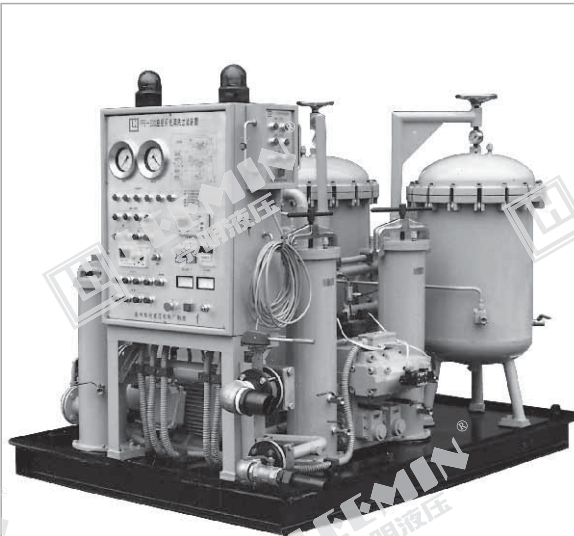
达到 NAS1638 清洁度等级 5、6、7、8。
Reaching NAS1638 Flushing accurate class: Five, Six, Seven, Eight



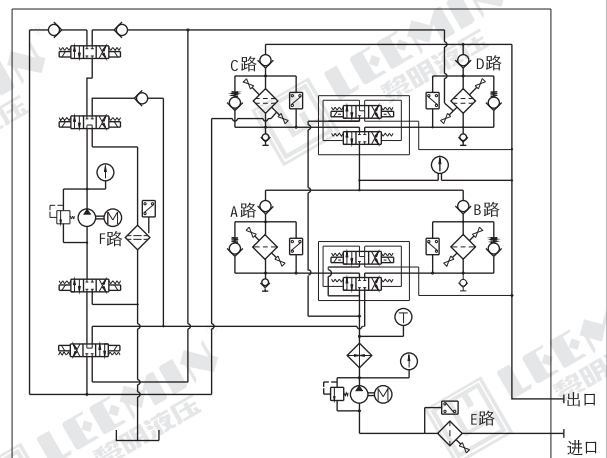
R: 带加热器
R: With Heater
L: 带冷却器
L: With Cooler

本装置流量: 100L/min 200L/min 400L/min
Flow: 100L/min 200L/min 400L/min
(45L/min 70L/min 110L/min 仅KFFE)

(三) 外形及原理 SHAPE AND THEORY



FFE系列



辅助检修系统

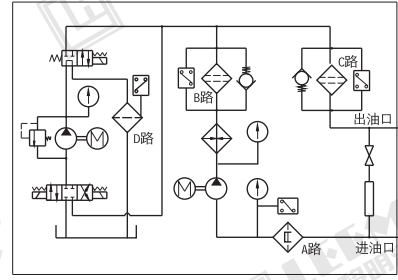
主循环系统



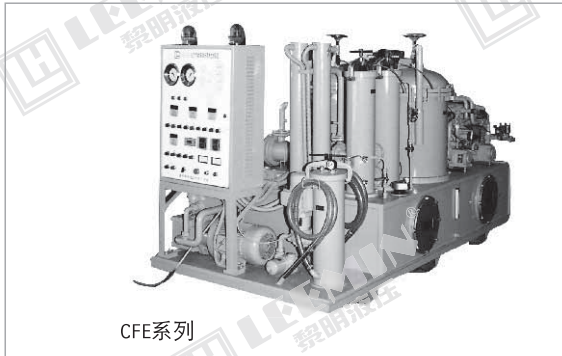
LEEMIN
黎明液压



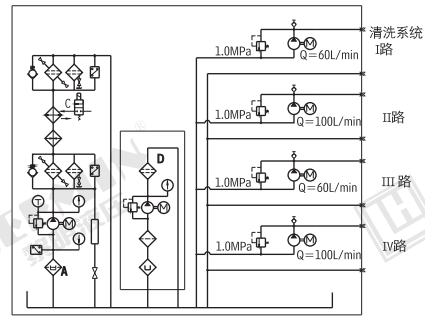
DF FE系列



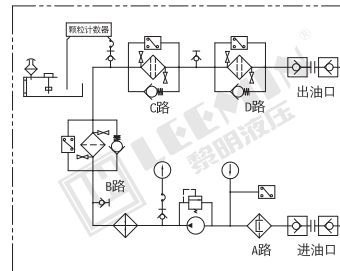
A路: 表示吸油磁性过滤器(A) C路: 表示管路精过滤器(C)
B路: 表示管路粗过滤器(B) D路: 表示辅助系统精过滤器(D)



CF FE系列



KF FE系列



A路: 表示吸油磁性过滤器(A) C路: 表示管路精过滤器(C)
B路: 表示管路粗过滤器(B) D路: 表示辅助系统精过滤器(D)

型号	外形尺寸mm (长×宽×高)	装机总功率(带加热器)	使用电压(V)	冲洗流量(L/min)	适用场所
FFE8-100	1800 × 1460 × 1373	14KW	380	100	移动机械
FFE8-200	2030 × 1560 × 1593	16KW	380	200	移动机械
FFE8-400	2200 × 1560 × 1593	18KW	380	400	移动机械
DF FE8-100	1225 × 820 × 1116	13.5KW	380	100	固定或移动
DF FE8-200	1481 × 990 × 1206	15.5KW	380	200	固定或移动
DF FE8-400	1481 × 990 × 1206	17.5KW	380	400	固定或移动
CF FE8-200	2800 × 1500 × 1650	25KW	380	63二组 100二组	移动机械
KF FE8-45	1380 × 820 × 1360	4.5KW	380	45	固定或移动
KF FE8-70	1380 × 820 × 1360	5.2KW	380	70	固定或移动
KF FE8-110	1500 × 870 × 1360	13KW	380	110	固定或移动

*我公司还可据用户不同要求进行设计制造, 欢迎广大用户来电来函洽谈, 详细资料备索。

Our plant can designed and produce different products according to the demand of customers.Inquires and orders are welcome.and enclosed details.



B、JN系列 < 适用于造船工业，冶金行业，大型油库等 >
JN SERIES < it's used for shipment industry, Metallurgical industry and Great-oil-stock >

(一) 简介

JN 系列管路清洗过滤装置是我公司针对江南造船厂船用管道冲洗而设计的一种清洗过滤设备，具有外型美观，结构紧凑，使用方便，性能可靠，功能齐全，噪声低等优点。适用于大型船舶、冶金行业清洗液压系统在管道安装和使用过程中生成的污染物，减少液压系统因污染而造成的故障，从而提高船用液压系统、冶金液压系统设备的使用寿命和可靠性。也可用于对油库或大型油箱工作油液的定期维护。

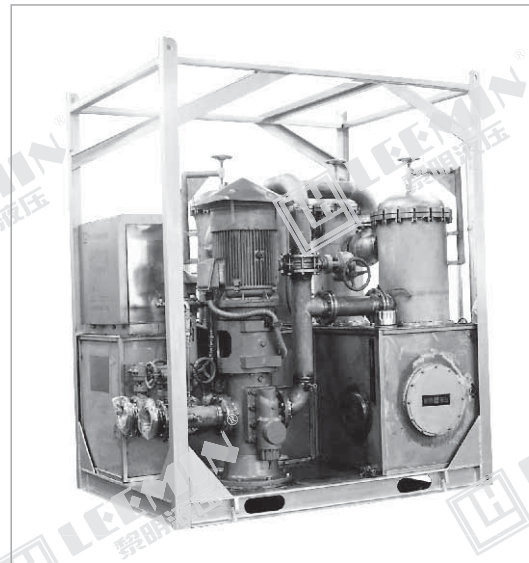
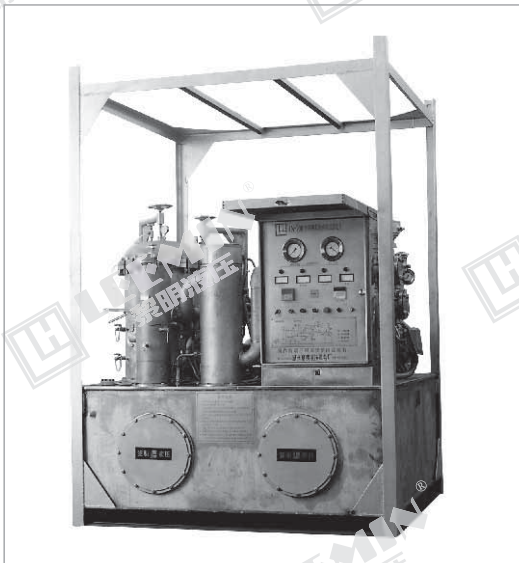
(二) 型号说明

<p>管路系统清洗过滤装置 Pipe-line system unit</p> <p>达到NAS1638清洁度等级：5、6、7、8、9 Reaching NAS1638 Flushing Accurate Class: five, six, seven, eight, nine</p> <p>压力等级： A—1.0MPa Pressure Class B—1.6MPa C—2.5MPa D—4.0MPa</p> <p>流量： 400-400L/min Flow 520-520L/min 700-700L/min 1000-1000L/min 1300-1300L/min</p>	<p>JN □ — □ □ □ / □ □ — □</p>
--	-------------------------------

INTRODUCTION

JN pipe-line system flushing unit series with beautiful shape, precise structure, reliable instinct, complete function, low noise and so on is a new type of flushing-filter facility in our plant which is designed according to pipeline flushing of Ship-factory in Southern River. It's fit for large ship and metallic department to reduce pollution and increase the reliability and life span of hydraulic system and metallic hydraulic system facility. Additionally, it can be used to prosecute periodic protection of warehouse or working oil in large oil tank.

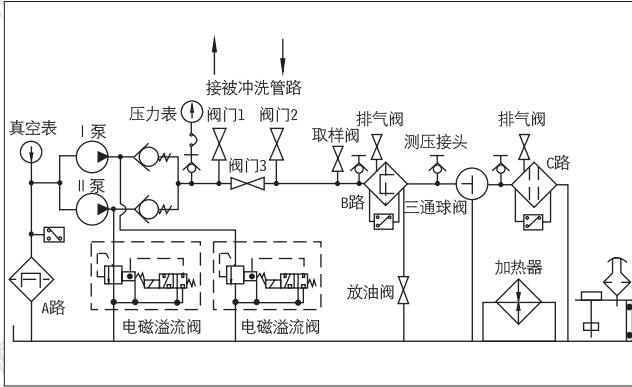
<p>P: 油箱、管道、过滤器材料为不锈钢 P: Oil tank, pipe-road and filter substance is stainless steel 省略: 油箱、管道、过滤器材料为碳钢 Omit: Oil tank, pipe-road and filter substance is carbonic steel</p> <p>K: 带污染检测传感器 K: The Inspection transducer with Pollution 省略: 不带污染检测传感器 Omit: The Inspection Transducer without Pollution</p> <p>R: 带加热器 R: With Heater L: 带冷却器 L: With Cooler RL: 带加热器及冷却器 RL: With Heater and Cooler 省略: 不带加热器及冷却器 Omit: without Heater and Cooler</p> <p>省略: 循环系统闭式回路 Omit: Cyclic system closed circuit K: 循环系统开式回路 K: Cyclic system open circuit</p>	<p>JN □ — □ □ □ / □ □ — □</p>
---	-------------------------------



※注：可根据用户不同要求进行设计制造。
Remarks: Our plant can design and manufacture different products according to the demand of customers.



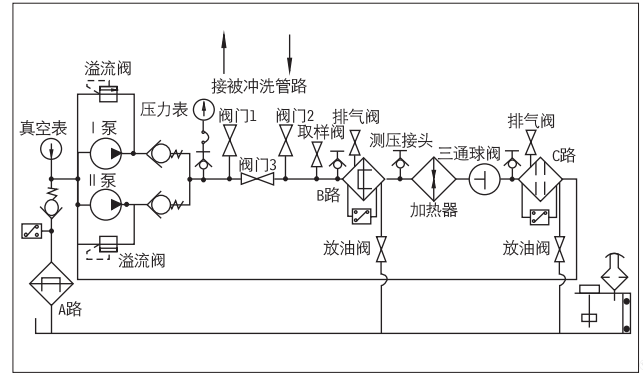
(三)工作原理图 WORKING THEROY PICTURE



A路: 磁性过滤和吸油粗过滤器(100 μ m);
B路: 磁性过滤和回油粗过滤器(50 μ m);
C路: 回油精过滤器(5 μ m);

A-road magnetic filter & suction rough filter (100 μ m)
B-road magnetic filter & return rough filter (50 μ m)
C-road circuit oil fine filter (5 μ m)

JN □-□□□ 开式循环



A路: 磁性过滤和吸油粗过滤器(100 μ m);
B路: 磁性过滤和回油粗过滤器(50 μ m);
C路: 回油精过滤器(5 μ m);

A-road magnetic filter & suction rough filter (100 μ m)
B-road magnetic filter & return rough filter (50 μ m)
C-road circuit oil fine filter (5 μ m)

JN □-□□□ 闭式循环

(四)性能

- 1、系统采用封闭式结构，密封良好，杜绝外界污染的再浸入。
- 2、过滤效率高，滤芯使用寿命长，采用4级过滤：磁性过滤粗过滤、中粗过滤、回油精过滤。粗过滤和中粗过滤均设有磁性过滤，采用金属纲过滤，滤芯可重复使用，清洗极其方便，利用率高。精过滤采用玻璃纤维过滤材料，其过滤比 $\beta \times \geq 200$ ，过滤效率 $n \geq 99.5\%$ ，纳污量大，滤芯使用寿命长。
- 3、本装置流量大，因而适用于冶金、造船行业冲洗大直径管道。
- 4、更换滤芯方便、迅速。
- 5、本装置设有加热器，可实现人工设定温度自动控制。并有油温数码显示，各路过滤器均设有污染堵塞指示。
- 6、本装置进出口口设有取样阀，便于对油液及系统实际工作状况进行检测。另外，还可配置在线污染检测传感器，可在线检测油清洁度(直接读出NAS等级或ISO等级)。
- 7、在操作面板上还有工作时间设定和累积工作时间计数，以便控制每次过滤时间及每次更换滤芯的时间。
- 8、设有补油系统，向被冲洗管道灌油方便。
- 9、电机、油泵等元件防风雨，其口油箱、管道、过滤器可采用于不锈钢制造，封闭式电器控制柜，可在露天作业，耐腐蚀，特别适合造船行业。

INSTINCTS

- 1.The system installs closed structure and seal well in order to avert outer pollution, which is invaded again.
- 2.High filtration efficiency, long filter element life, and adopting fourclass filter: magnetic filter, coarse filter, medial filter, and fine filter. Coarse filter and medial filter have magnetic filter and adopt metallicnet. Filter element can be used tautologically, so it's convenient and it has high pro fitability. Fine filter adopts glass-fiber substance. its filter rate ≥ 200 ,filter profitability $\geq 99.5\%$, it is also with large dirt holding capacity and long service life.
- 3.The device has large flow rate, and can be used in metallurgy and shipbu ilding industry for flushing big diametrical pipeline.
- 4.It is convenient and quick to change filter element.
- 5.It has man-control heater and show oil temperature number; all respective filters have pollution indicators.
- 6.The sample valve is installed at the export in order to inspect the workingstatus of the oil and the system. Additionally, it can be configured with on-line inspecting transducer and can inspect the on-line oil clean accuracy. (Reading NAS class and ISO class directly)
- 7.The working time can be set and accumulated on operating board so as to control the time for filtering and changing filter element.
- 8.It has complementary oil system, which is convenient to inject the oil into flushed pipeline.
- 9.Electric motor and oil-pump are immune from wind and rain; other oil tanks, pipelines and filters can be made of stainless steel, closed electric control dais and can work outside, immune from staining, especially fit for shipbuilding industry.