



SDRLF系列大流量双筒回油过滤器

SDRLF DUPLEX LARGE FLOW RATE RETURN LINE FILTER SERIES

(一) 简介

SDRLF双筒大流量回油过滤器是由两只单筒过滤器及二位六通换向阀组成,结构简单,使用方便,并带有旁通阀及滤芯污染堵塞发讯器,以达到保证系统安全的目的。

单筒过滤器在工作过程中滤芯堵塞到一定程度需清洗或更换时,要停止主机工作,这样不仅浪费时间更不能满足主机连续工作的需要,双筒过滤器有效地解决了单筒过滤器这方面的缺陷,在不停机的情况下可清洗或更换滤芯以保证主机正常连续工作。

它的工作特点是当一只过滤器滤芯堵塞需更换时,不需要停止主机工作,只要打开压力平衡阀并转动换向阀,另一只过滤器即可参加工作,然后更换已堵塞的滤芯,需更换滤芯侧过滤筒,允许少量内泄漏。

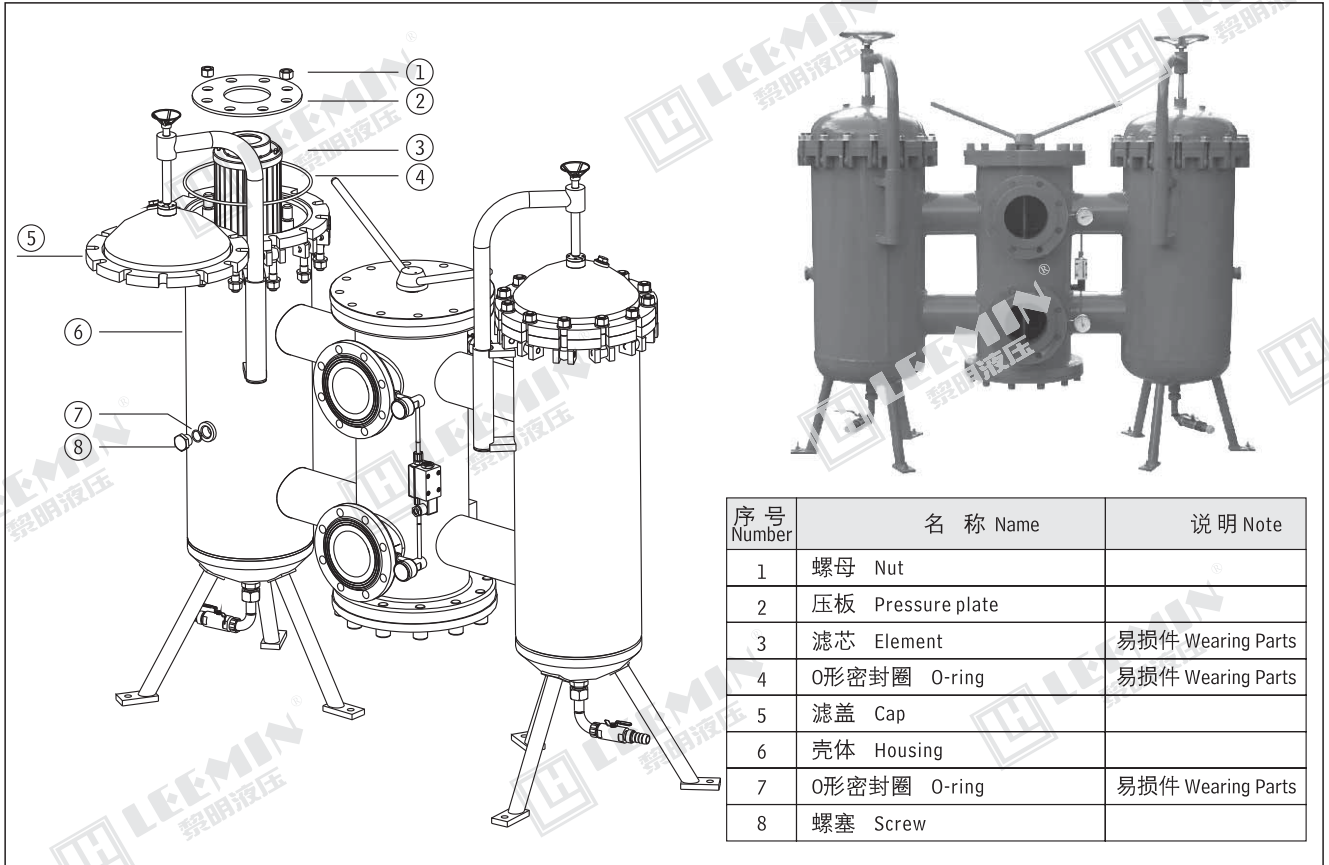
本过滤器广泛应用于重型机械、矿山机械、冶金机械等液压系统。

INTRODUCTION

SDRLF series filter is composed of two single Bowl filters and a 2-position 6-way directional valve. It is simple in construction and easy to use. There is a by-pass valve and a contamination indicator in it, for protecting the hydraulic system safety.

The feature of this filter allows continues operation even during element is changed for which is clogged by contaminants. After opening the balance valve and then turn the directional valve, the other filter begins to work; the cloggedelement should be changed in time.

This series filter is widely used in the hydraulic systems of heavy-duty mining and metallurgical machines.



(二) 型号说明 MODEL CODE

SDRLF □ - A □ × □ □

大流量双筒回油过滤器
Duplex large flow rate return line filter

BH: 介质为水—乙二醇 Water-glycol
省略: 介质为一般液压油 Omit if use hydraulic oil

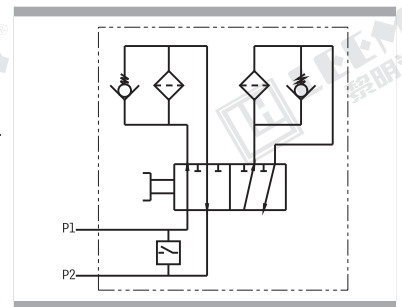
公称压力: Pressure class 1.6(MPa)

E: 电子模拟发讯器 Electronic analog indicator
P: 带CMS发讯器 With CMS indicator
省略: 不带发讯器 Omit if without indicator

过滤精度: Filtration accuracy (μm)

公称流量: Flow rate (L/min)

注: 用户订购过滤器需配【电子模拟发讯器】时, 请与我公司技术部联系。





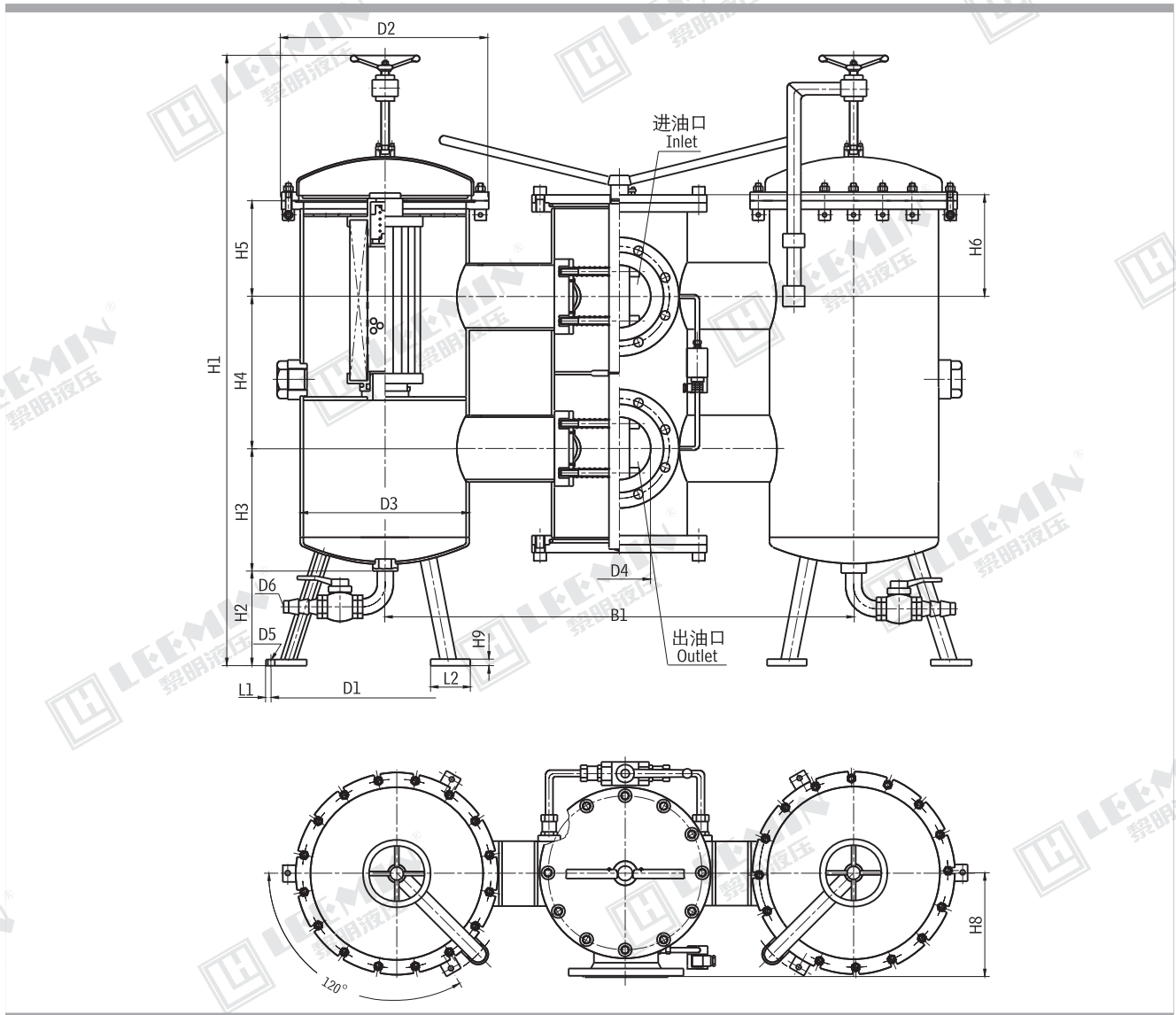
(三) 技术参数 TECHNICAL DATA

型号 Model	通径 Dia. (mm)	公称流量 Flow rate (L/min)	过滤精度 Filtr. (μ m)	公称压力 Press. (MPa)	压力损失 Pressure loss(MPa)		旁通阀开启压力 By-pass setting (MPa)	发讯装置功率 Indicator power	重量 Weight (Kg)	滤芯型号 Model of element	滤芯数量 Quantities of elements
					Initial	Max.					
SDRLF-A1300 × *P	100	1300	3	1.6	0.1	0.35	0.4	24V/48W 220V/50W	610	SFX-1300 × *	1 × 2
SDRLF-A2600 × *P	150	2600									2 × 2
SDRLF-A3900 × *P	200	3900	5								3 × 2
SDRLF-A6500 × *P	250	6500	10								5 × 2
SDRLF-A7800 × *P	250	7800	20								6 × 2
SDRLF-A9100 × *P	250	9100	30								7 × 2

注：*为过滤精度。若使用介质为水—乙二醇，使用压力1.6MPa，公称流量2600L/min，过滤精度10 μ m，带发讯器。则过滤器型号为SDRLF · BH-A2600 × 10P，滤芯型号为SFX · BH-110 × 10

Note:*is represents filtration. If the filter fluid is water-glycol, usage pressure 1.6MPa, flow rate 2600L/min, filtration accuracy 10 μ m and the filter equipped with indicator. The model of the filter is SDRLF · BH-A2600 × 10P, the model of element is SFX · BH-1300 × 10

(四) 安装外形尺寸：MOUNTING SIZE

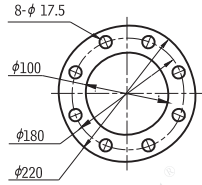




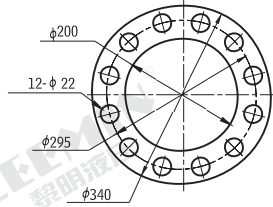
LEEMIN
黎明液压

外接法兰连接尺寸 External connecting flange

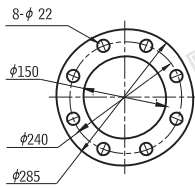
SDRLF-A1300



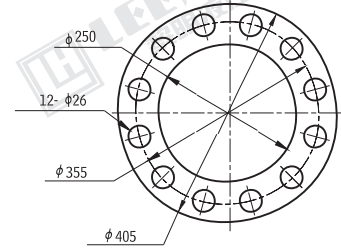
SDRLF-A3900



SDRLF-A2600



SDRLF-A 6500
7800
9100



型号 Model	尺寸 Size(mm)																滤芯 总数	
	B1	D1	D2	D3	D4	D5	D6	H1	H2	H3	H4	H5	H6	H8	H9	L1		L2
SDRLF-A1300 × *P	900	450	340	264	100	14	21	1400	250	230			150	200		20	80	2
SDRLF-A2600 × *P	1125	555	500	412	150	18	32.4	1480	250	275	365	230	225	260	12	29	100	4
SDRLF-A3900 × *P					200													6
SDRLF-A6500 × *P	1400	600	610	516	250	23	1700	250	350	450	250	270	325	18	31	110	10	
SDRLF-A7800 × *P																	12	
SDRLF-A9100 × *P																	14	