



## XNL系列箱内回油过滤器

### XNL TANK MOUNTED RETURN LINE FILTER SERIES

#### (一) 简介

XNL系列箱内自封式回油过滤器是我公司开发的又一新系列回油过滤器，装于液压系统回油管处。滤除液压系统中由于元件磨损而产生的金属颗粒以及密封件磨损的橡胶质等污染物，使流回油箱的油液保持清洁。该系列过滤器还具有以下特点：(a)直接安装在油箱内，简化了系统的管路，节省空间，使系统布置更为紧凑。(b)带有自封阀：检修系统时，油箱里的油液不会回流。更换滤芯时，能把滤芯内的污染物一同带出油箱，使油液不会外流。(c)带有旁通阀：当滤芯被污染物堵塞导致压差达0.35MPa时，如不能马上更换滤芯，设在滤芯顶部的旁通阀会自动开启(其压差为0.4MPa)，以保护系统正常工作；(d)带有磁性装置：可滤除回油油液中 $1\mu\text{m}$ 以上的铁磁性颗粒。

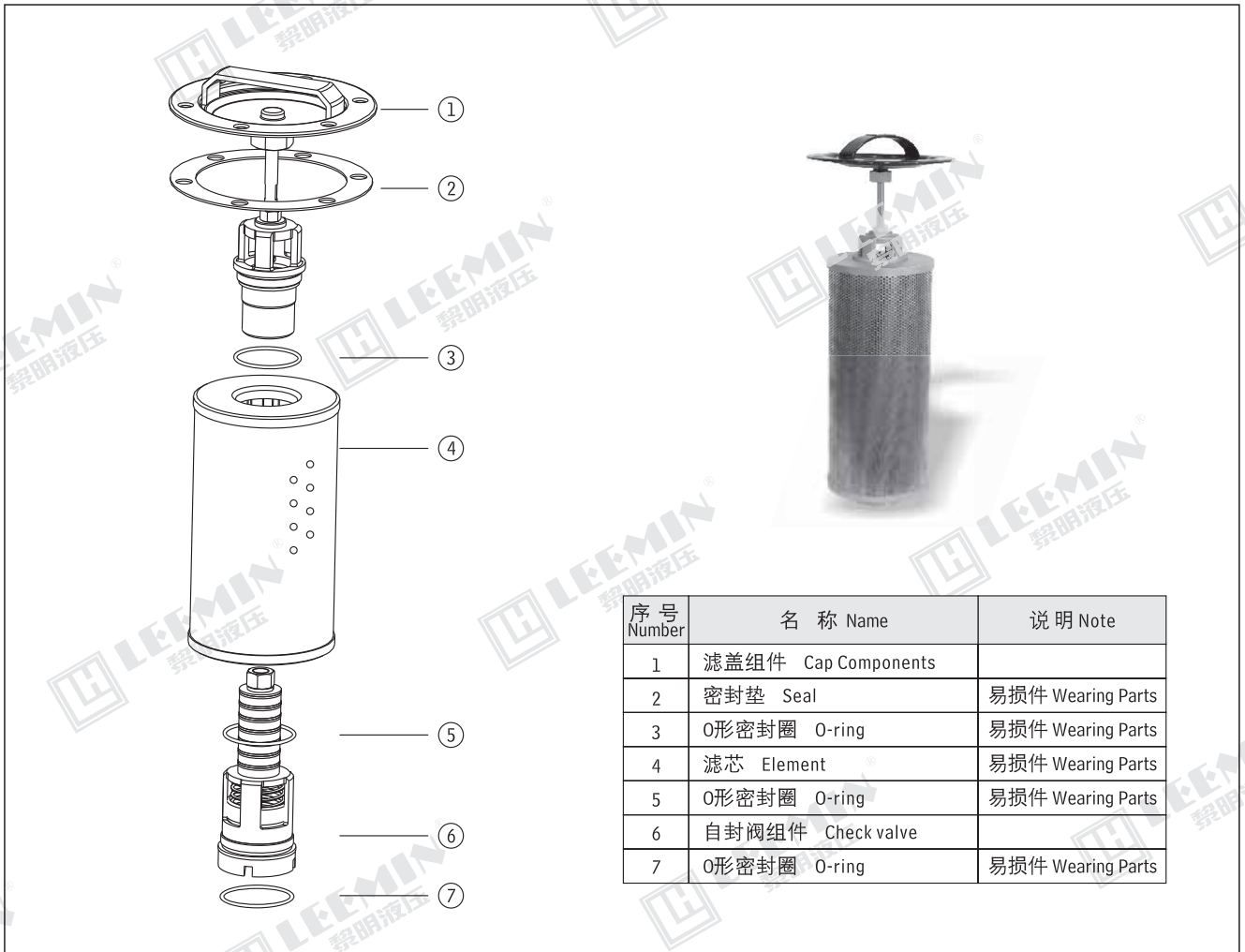
用户选用XNL系列过滤器时，务必要配置压力发讯器，当滤芯被污物堵塞到压差为0.35MPa时，应及时更换滤芯。

#### INTRODUCTION

The XNL series return line filter is a new type filter. It is used in the return line of hydraulic system to remove all the contaminants and keep the oil cleaning when the oil returns to the tank. This series filter has some features as follow:

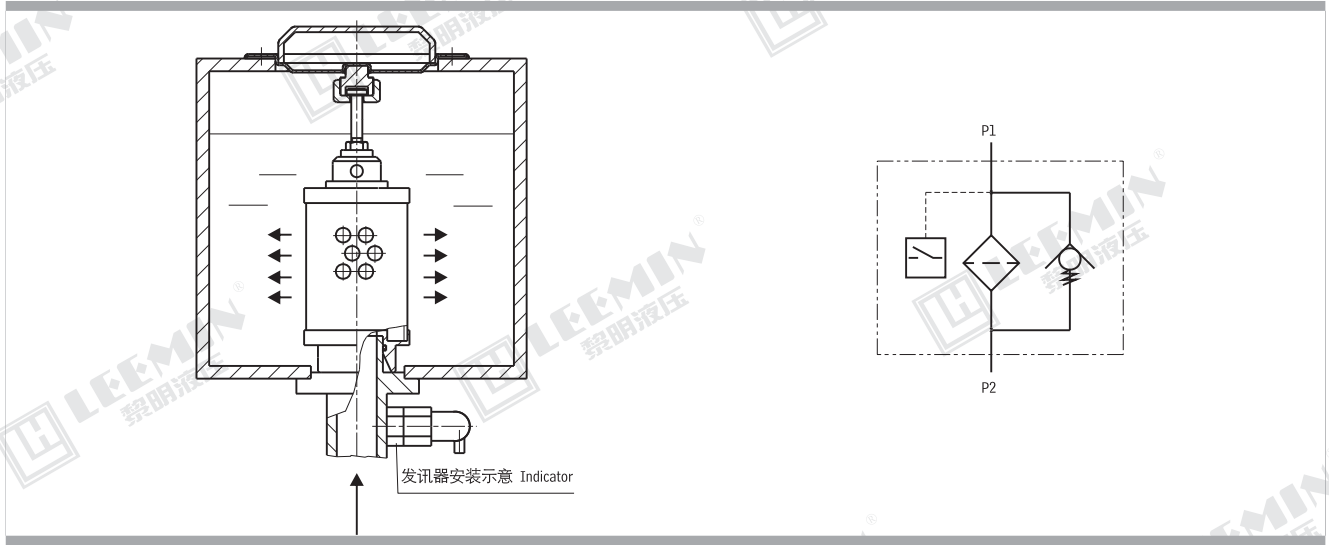
- a) it can be installed on the top of tank;
- b) The check valve will not let the oil flow out of the tank during maintenance the contaminants inside the element can be taken out when changing the element;
- c) there is a by-pass valve on the top of element, when the pressure drop across the filter element attains 0.4MPa, the valve will open to protect the hydraulic system safety;
- d) the permanent magnets inside the filter can filter the magnetic particles above  $1\mu\text{m}$  dia. from the oil.

If you chose XNL series filter, the indicator should be equipped. When the pressure drop across the element reaches 0.35MPa, the element must be

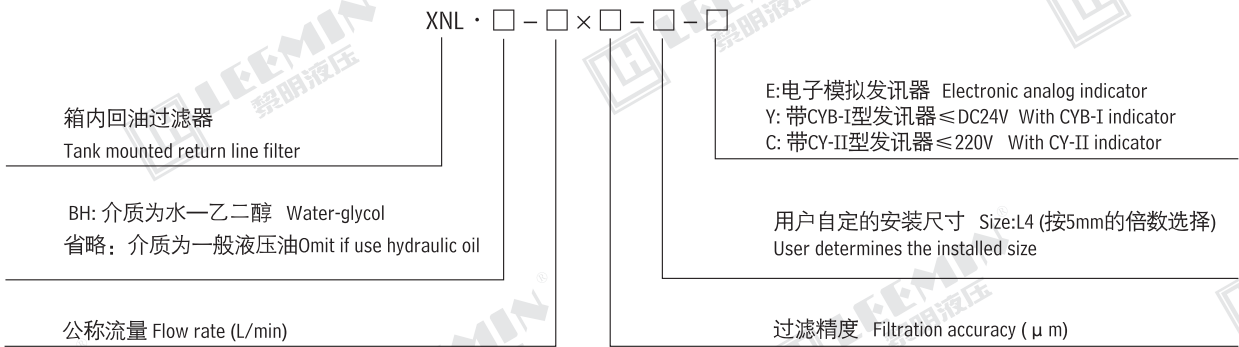




**LEEMIN**  
黎明液压



(二)型号说明 ORDERING INFORMATION



注: 用户订购过滤器需配【电子模拟发讯器】时, 请与我公司技术部联系。

(三)技术参数 TECHNICAL DATA

型号 Model	公称流量 Flow rate (L/min)	过滤精度 Filtr. (μm)	通径 Dia. (mm)	公称压力 Press. (MPa)	压力损失 Initial ΔP (MPa)		发讯装置 Indicator		旁通阀开启压力 By-pass setting (MPa)	重量 Weight (Kg)	滤芯型号 Model of element				
					初始 Initial	最大 Max.	(V)	(A)							
XNL - 25 × * - C Y	25	3	20	0.6	≤ 0.1	0.35	12	2.5	0.4	1.2	NLX - 25 × *				
XNL - 40 × * - C Y	40										NLX - 40 × *				
XNL - 63 × * - C Y	63		NLX - 63 × *												
XNL - 100 × * - C Y	100	5	32								24	2	2.5	4.6	NLX - 100 × *
XNL - 160 × * - C Y	160														NLX - 160 × *
XNL - 250 × * - C Y	250	10	50								36	1.5	5.1	10.1	NLX - 250 × *
XNL - 400 × * - C Y	400														NLX - 400 × *
XNL - 630 × * - C Y	630														NLX - 630 × *
XNL - 800 × * - C Y	800	20	80								220	0.25	10.8	14.2	NLX - 800 × *
XNL - 1000 × * - C Y	1000														NLX - 1000 × *

注: \* 为过滤精度, 若使用介质为水—乙二醇, 公称流量160L/min, 过滤精度10 μm, 带CYB-I型发讯器, 则过滤器型号为XNL · BH-160 × 10Y, 滤芯型号为NLX · BH-160 × 10。

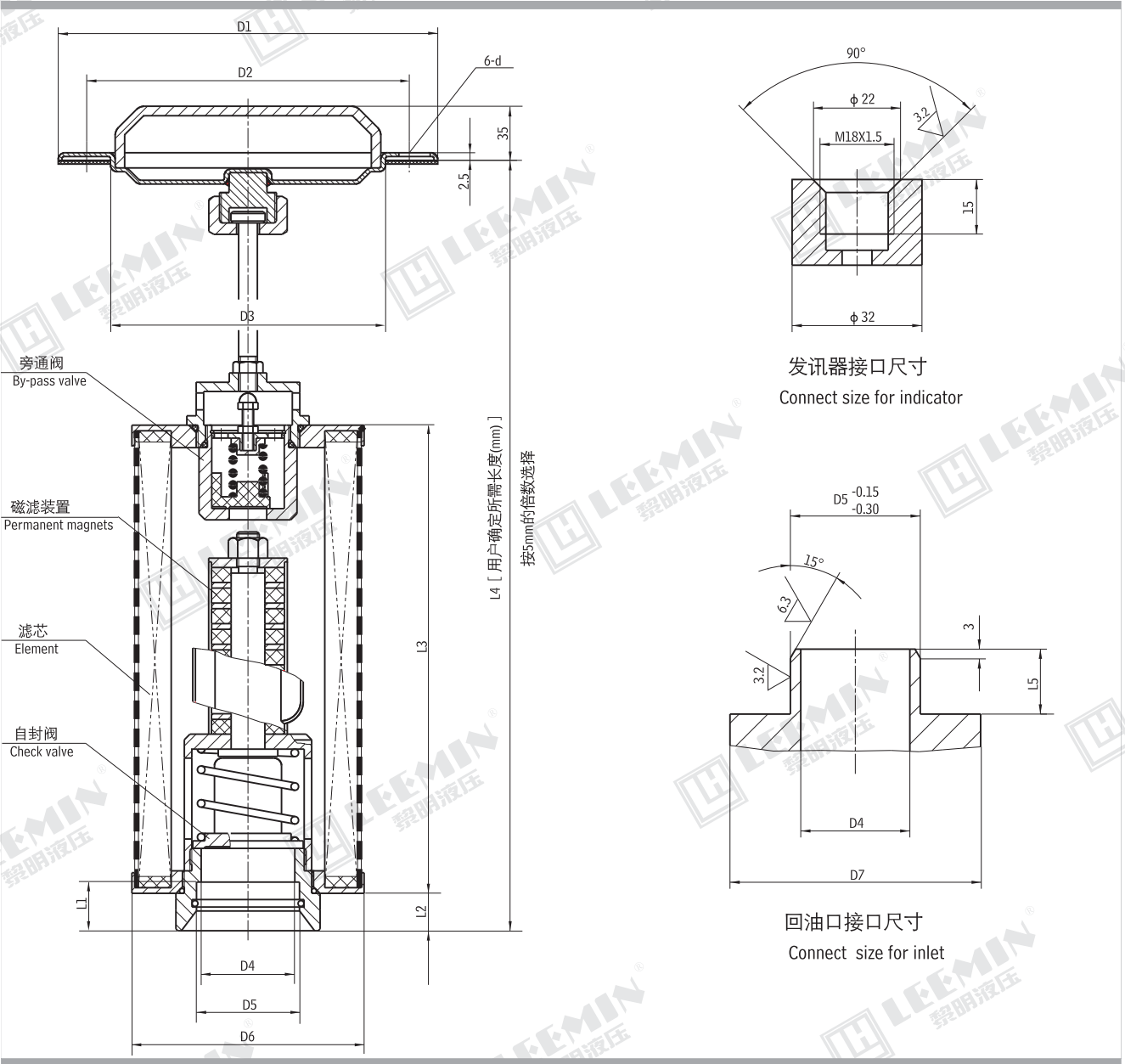
Note: \* is filtration accuracy, If the medium is water-glycol, flow rate is 160L/min, filtration accuracy is 10 μm, with CYB-I indicator, the model of this filter is XNL · BH-160 × 10Y, the model of element is NLX · BH-160 × 10.



**LEEMIN**  
黎明液压

(四)安装外形尺寸 MOUNTING SIZE

(五)用户加工尺寸 MAUNFACTURE SIZE FOR CUSTOMER



单位Unit: mm

型号 Model	D1	D2	D3	D4	D5	D6	D7	L1	L2	L3	最小\Min. L4	L5	d
XNL - 25 × * <sub>C</sub> <sub>Y</sub>	φ 129	φ 105	φ 85	φ 20	φ 25	φ 80	φ 46	21	12	145	280	20	φ 9
XNL - 40 × * <sub>C</sub> <sub>Y</sub>										180	315		
XNL - 63 × * <sub>C</sub> <sub>Y</sub>	φ 154	φ 130	φ 110	φ 32	φ 40	φ 106	φ 56	23	15	160	300	22	φ 9
XNL - 100 × * <sub>C</sub> <sub>Y</sub>										210	350		
XNL - 160 × * <sub>C</sub> <sub>Y</sub>	φ 200	φ 170	φ 145	φ 50	φ 55	φ 141	φ 76	28	20	250	430	27	φ 11
XNL - 250 × * <sub>C</sub> <sub>Y</sub>										320	500		
XNL - 400 × * <sub>C</sub> <sub>Y</sub>	φ 242	φ 210	φ 185	φ 80	φ 85	φ 180	φ 108	32	22	400	580	31	φ 13
XNL - 630 × * <sub>C</sub> <sub>Y</sub>										500	680		
XNL - 800 × * <sub>C</sub> <sub>Y</sub>	φ 262	φ 230	φ 205	φ 90	φ 100	φ 200	φ 127	32	22	600	805	31	φ 13
XNL - 1000 × * <sub>C</sub> <sub>Y</sub>										750	955		