



MSP系列旋装管路过滤器 MSP SPIN-ON LINE FILTER SERIES

(一) 特点 FEATURES

1. 铝合金滤头; Aluminium alloy filter head
2. 最高使用压力3.15MPa;
Max. operating pressure:3.15MPa
3. 温度使用范围-30℃ ~ +100℃;
Temperature range: -30℃ ~ +100℃
4. 配置旁通阀0.35MPa, 发讯器0.3MPa;
With bypass valve 0.35MPa, indicator 0.3MPa

(二) 技术参数 TECHNICAL DATA

型号 Model	公称流量 Flow rate (L/min)	过滤精度 Filtr. (μ m)	公称压力 Press.	爆破压力 Blow up press. (MPa)	旁通阀开启压力 By-pass setting (MPa)	滤芯型号 Model of element	
MSP-06X*	60	3	3.15MPa	6.9MPa	0.35	MSPX-06X*	
MSPA-06X*	80					MSPAX-06X*	
MSP-08X*	110					MSPX-08X*	
MSPA-08X*	140	MSPAX-08X*					
MSP-10X*	160	20		2.5MPa		5.5MPa	MSPX-10X*
MSPA-10X*	240						MSPAX-10X*
MSPB-10X*	280		MSPBX-10X*				

(三) 型号说明 MODEL CODE

□□ - 06 × □ - □ - □

MSP系列旋装管路过滤器MSP spin on line filter

省略: 整套过滤器, X为滤芯
Omit of a set of filter, X is element

口径 Nom.Dia. 06、08、10

过滤精度 Filtration accuracy:3、5、10、20、30 μ m
若仅购滤头此项省略 Omit of it if only buy filter head

省略: 发讯器安装在标牌侧omit if indicator is on name plate side
R: 发讯器安装在标牌反侧(除口径10外)
R is for indicator on the opposite side of name plate,(Except Dia 10)

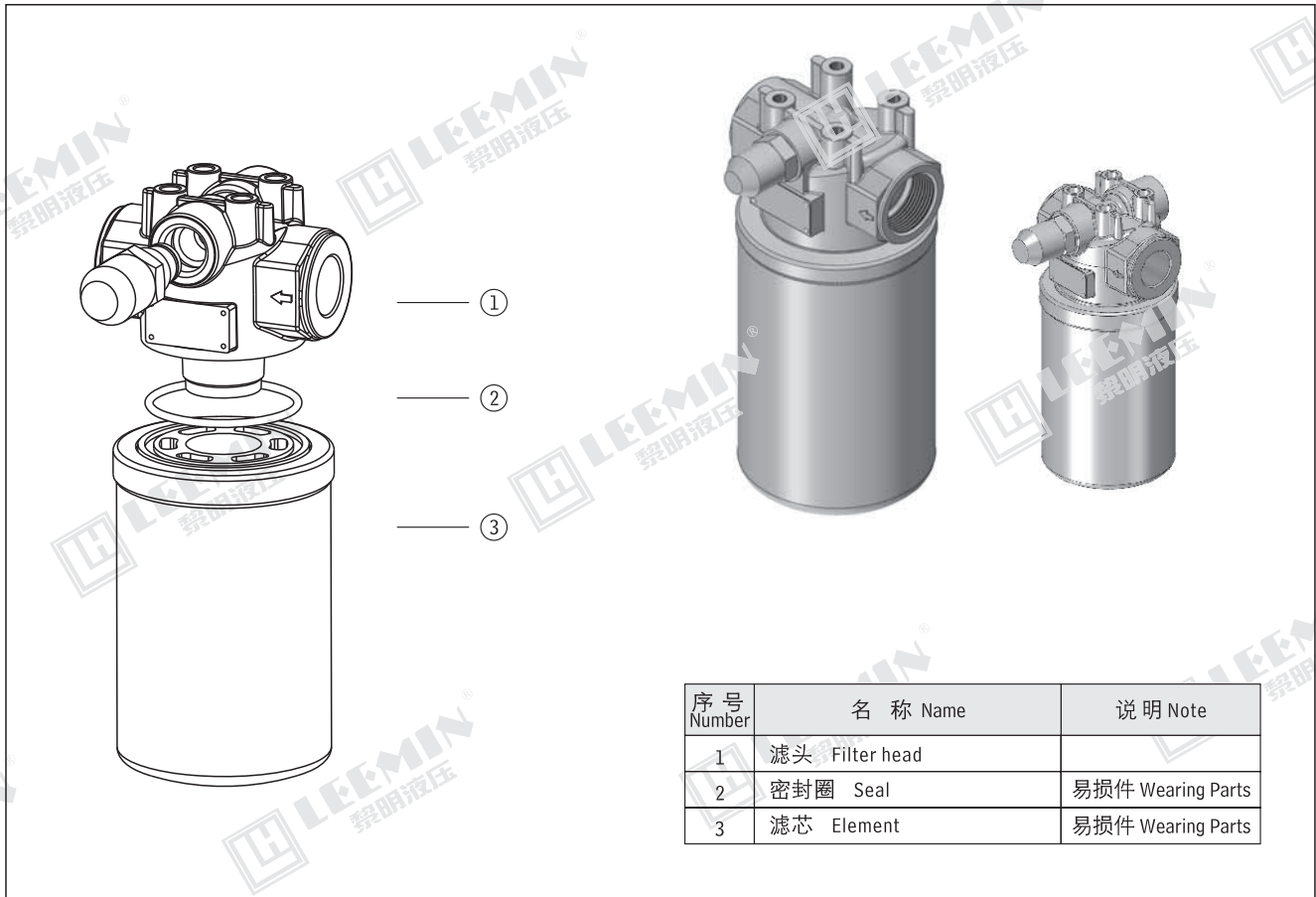
E:电子模拟发讯器 Electronic analog indicator

C: 带CS-III压差发讯器 C for CS-III indicator

M: 带CM-I型目视压差发讯器 M for CM-I visual indicator

省略: 不带发讯器omit :without indicator

注: 用户订购过滤器需配【电子模拟发讯器】时, 请与我公司技术部联系。

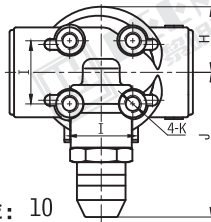
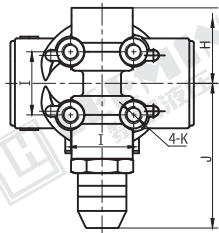
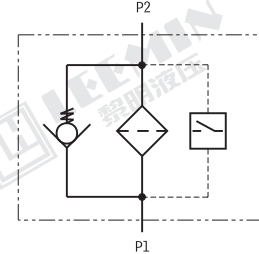
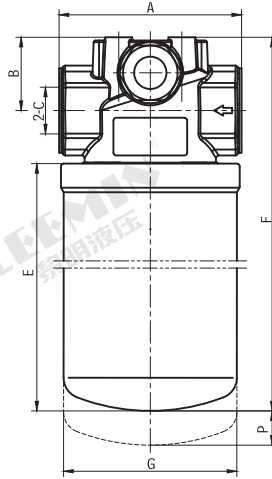
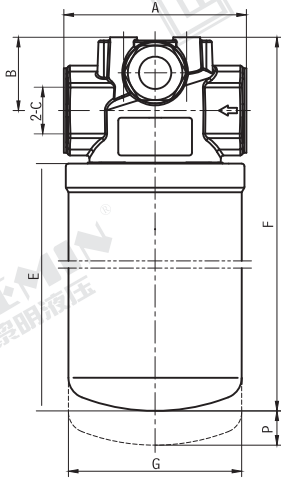


序号 Number	名称 Name	说明 Note
1	滤头 Filter head	
2	密封圈 Seal	易损件 Wearing Parts
3	滤芯 Element	易损件 Wearing Parts



LEEMIN
黎明液压

(四)外形尺寸 MOUNTING SIZE

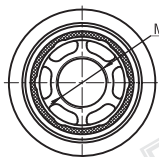
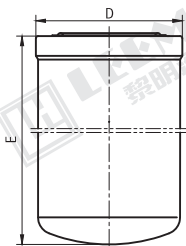


口径: 06、08

口径: 10

型号 Model	A	B	C	E	F	G	H	I	J	K	P
	(mm)										
MSP-06X*	102	40	G3/4	118	187	φ 95	43	35.1	81	M10深17	25
MSPA-06X*				153	222						
MSP-08X*			G1	193	262						
MSPA-08X*				243	312						
MSP-10X*	128	45.5	G1 1/4	195	276	φ 118.5	44.5	47.8	86		
MSPA-10X*				305	386						
MSPB-10X*				365	446						

旋装过滤器滤芯 SPIN-ON ELEMENT



型号 Model	E	D	M
MSPX - 06 × *	118	φ 98	1 ³ / ₈ " - 12UNF
MSPAX - 06 × *	153		
MSPX - 08 × *	185		
MSPAX - 08 × *	243		
MSPX - 10 × *	195	φ 122	1 ³ / ₄ " - 12UN
MSPAX - 10 × *	305		
MSPBX - 10 × *	365		

更换滤芯

- 1、停机，旋开过滤器滤芯（需要带式扳手）。
- 2、涂润滑油脂在新滤芯的密封垫。
- 3、然后先用手拧紧，再用带式扳手拧紧。
- 4、开机，检查是否漏油，需要时再进一步拧紧。

Replacement of filter element

- 1、Downtime, unscrew the filter cartridge (need to strap wrench).
- 2、Apply grease in the new filter's gasket.
- 3、Tighten with the hand, and then use the strap wrench tight
- 4、Starting up, check If the oil spill, when need to tighten further.