



RFC系列回油过滤器 RFC RETURN FILTER SERIES

(一) 简介

本过滤器用于液压系统回油精过滤，滤除液压系统中元件磨损产生的金属颗粒以及密封件的橡胶杂质等污染物，使流回油箱的油液保持清洁。

(二) 性能和特点

- 1、本过滤器直接安装于油箱盖板上，简化系统回油管路布置
- 2、可选配集成空滤(仅110~140规格)，简化油箱布置
- 3、可选配回油连接管(仅110~140规格)，确保低液位时回油口在液面以下
- 4、滤芯采用过滤精度高、通油能力大、原始压力损失小、纳污量大的玻璃纤维滤材，其过滤精度以绝对过滤精度标定，过滤比 $\beta_{3, 5, 10, 20} \geq 200$ ，符合ISO标准

INTRODUCTION

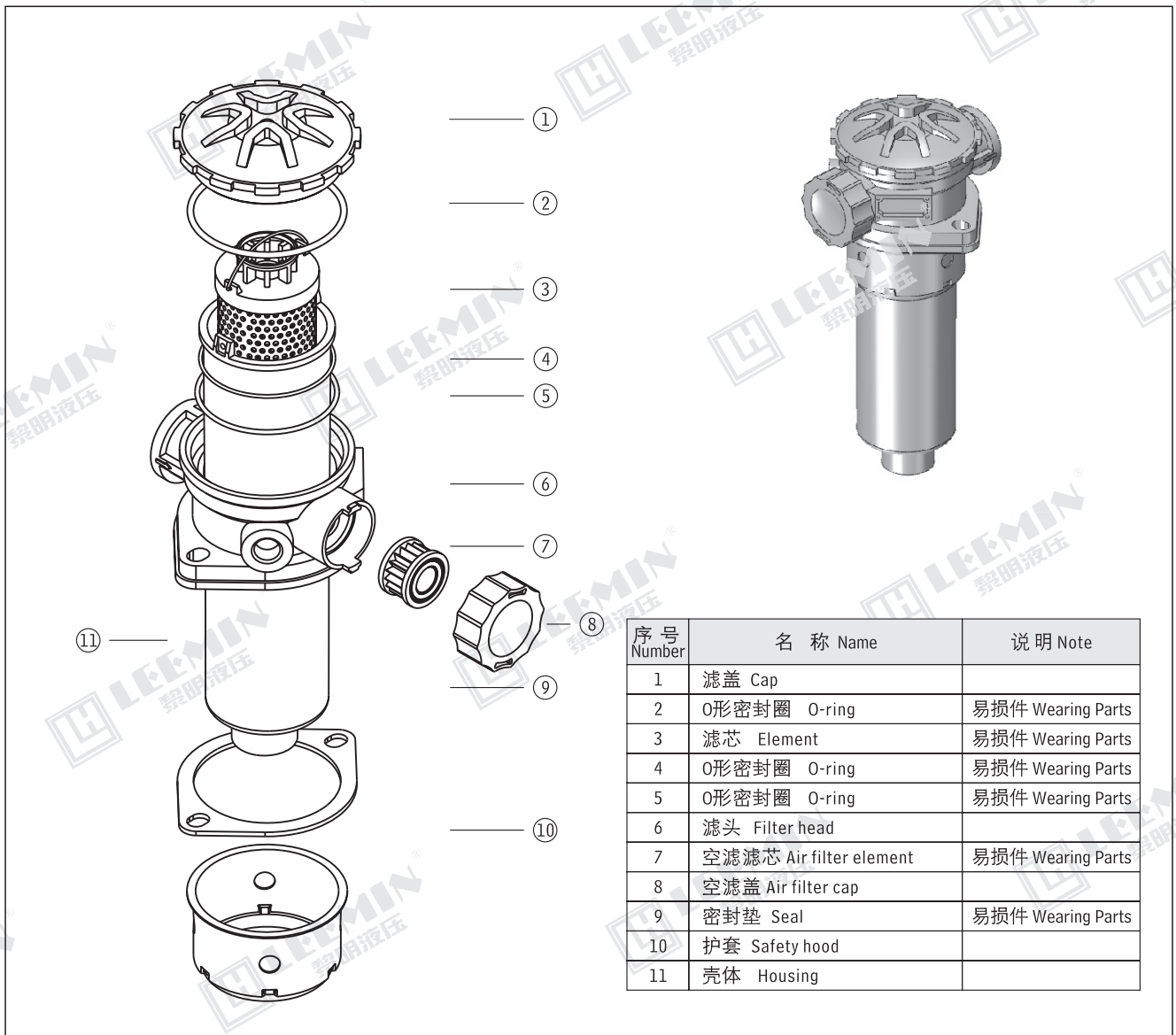
This filter is used for fine filtration of hydraulic system return oil, filtering out metal particles generated by component wear in the hydraulic system and rubber impurities in sealing components, etc., to keep the oil flowing back to the tank clean.

This filter is directly installed on the fuel tank cover plate, simplifying the arrangement of the system's return oil pipeline

Optional integrated air filter (only available in 110-140 specifications) to simplify fuel tank layout

Optional return oil connection pipe (only available in sizes 110~140) to ensure that the return throttle is below the liquid level when the liquid level is low

The filter element adopts glass fiber filter material with high filtration accuracy, large oil flow capacity, small original pressure loss, and large pollutant capacity. Its filtration accuracy is calibrated with absolute filtration accuracy, and the filtration ratios $\beta_{3, 5, 10, 20} \geq 200$, which comply with ISO standards





LEEMIN
黎明液压

(三) 型号说明 MODEL CODE

RFC · □ - □ × □ □ □ - D

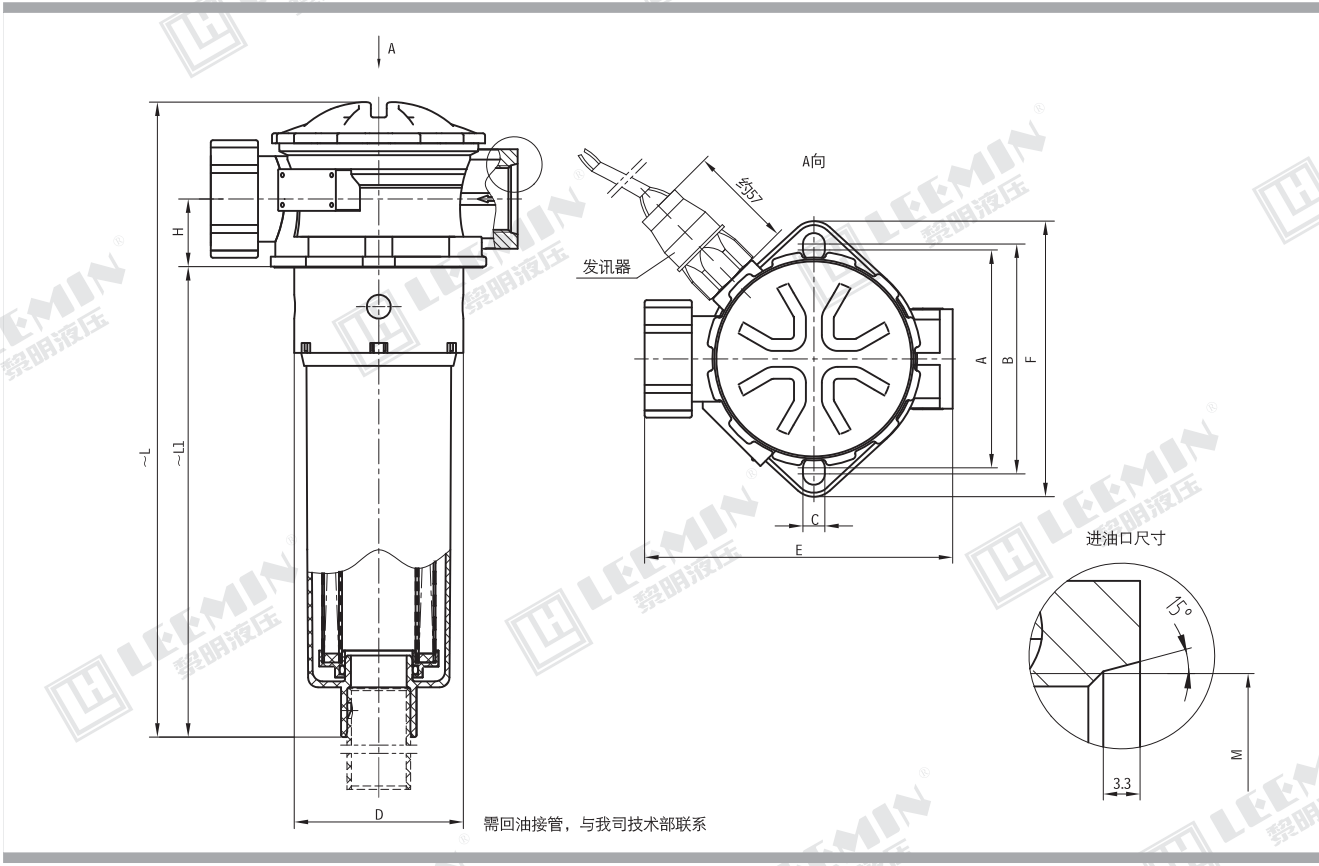
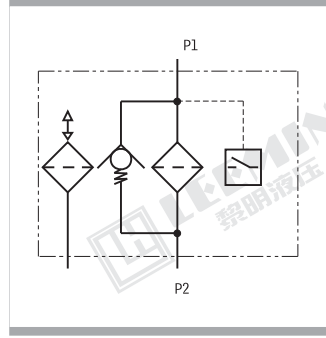
回油过滤器Reyurm filter	仅限于(RFC-210~330规格, 可选双侧进油口) Limited to (RFC-210 ~ 330 specifications, optional both side oil inlet)
BH: 介质为水—乙二醇 Water-glycol 省略: 介质为一般液压油 Omit if use hydraulic oil	
公称流量 Flow rate(L/min)	E:电子模拟发讯器 Electronic analog indicator Y: 带CYB-I型发讯器 ≤DC24V With CYB-I indicator C3: 带CY-III型发讯器 ≤220V With CY-III indicator 省略不带发讯器 Omit if without indicator
过滤精度 Filtration accuracy(μ m)	A:带空滤器 With breather filter(仅限于RFC-110~140规格) 省略: 不带空滤器 Omit if without breather filter

注: 用户订购过滤器需配【电子模拟发讯器】时, 请与我公司技术部联系。

(四) 技术参数 TECHNICAL DATA

型号 Model	公称流量 Flow rate (L/min)	过滤精度 Filtr. (μ m)	公称压力 Press (MPa)	压力损失 Initial ΔP (MPa)		发讯装置 Indicator (V) (A)		重量 Weight (Kg)	滤芯型号 Model of element
				Initial	Max.	(V)	(A)		
RFC-110X*	110	3	1	≤0.075	0.2	12	2.5		FCX-110X*
RFC-140X*	140					24	2		FCX-140X*
RFC-210X*	210	36				1.5	FCX-210X*		
RFC-270X*	270	220				0.25	FCX-270X*		
RFC-330X*	330	20							FCX-330X*

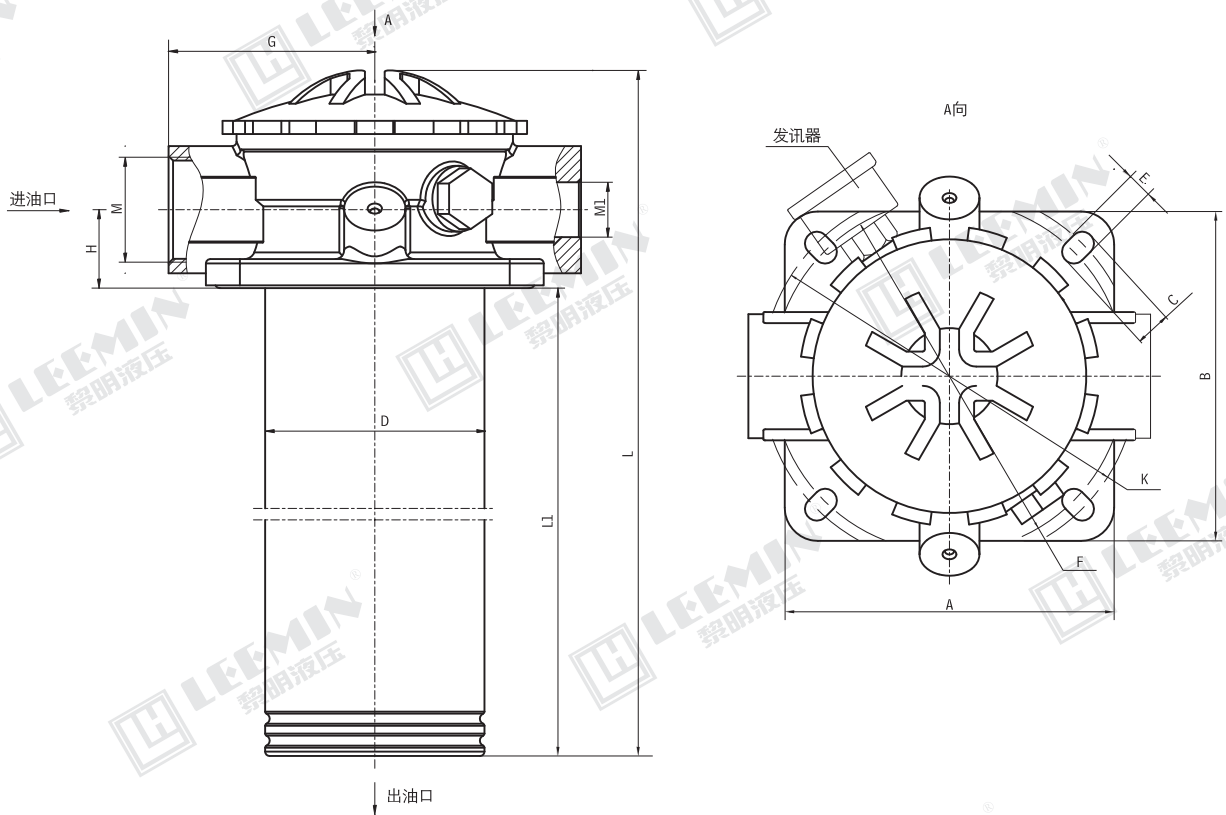
注: *为过滤精度, 若使用介质为水—乙二醇, 公称流量140L/min, 过滤精度10μ m, 带空滤器, 带CYB-I型发讯器, 则过滤器型号为 RFC · BH-140X10AY, 滤芯型号为FCX · BH-140X10。
Note: *is filtration accuracy, If the medium is water-glycol, flow rate is 63L/min, filtration accuracy is 10 μ m, with breather filter, with CYB-I indicator, the model of this filter is RFC · BH-140X10AY, the model of element is FCX · BH-140X10.



型号 Model	尺寸 Size (mm)									
	A	B	C	D	E	F	H	L1	L	M
RFC - 110 × *	109.5	115.5	11	φ85	145	138.5	35	205	290	1 5/16-12UN
RFC - 140 × *								270	355	



LEEMIN
黎明液压



型号 Model	尺寸 Size (mm)												
	A	B	C	D	E	F	G	H	K	L	L1	M	M1
RFC - 210 × *	154	154	17	φ100	11	φ164.5	94	34.5	φ175.5	346	250	G1 1/2	G1
RFC - 270 × *										478	382		
RFC - 330 × *										567	471		
RFC - 210 × *D										346	250		
RFC - 270 × *D										478	382		
RFC - 330 × *D										567	471		

磁性回油过滤器系列 MAGNETIC RETURN FILTER SERIES

简介

磁性回油过滤器是我公司参考国外先进技术资料及广大用户的具体要求而特殊设计的新产品，这些过滤器仅一小部分的滤头连接部分露在油箱外，其余大部分都在油箱内部，从而简化了系统管路，安装方便，系统排列紧凑美观。在结构上我们改进了原来管路回油过滤器的庞大结构，考虑到液压系统内产生量多的还是铁磁性污染物，所以在回油精过滤前，先经强磁铁进行磁性过滤，然后再经二级精密过滤。

这种过滤器设有滤芯污染堵塞发讯器和油路旁通阀，当回油压力达到0.35MPa时，发讯器发出开关信号或报警，还可直接从发讯器的表盘上读出回油压力值，以提示操作人员及时更换滤芯，保

证系统油液的清洁度。更换滤芯只需旋开过滤器端盖即可。当回油压力上升至 0.4MPa 时，过滤器内的旁通阀便自动卸荷，以避免回油压力过高造成整个系统工作性能不良。

INTRODUCTION

The WY & GP Series return filters are installed on the top of the tank. There are magnets in the filter. So magnetic contaminants can be removed from oil. The elements are made of fine fibre media with high efficiency, lower pressure drop and long life. Differential Pressure indicator will signal when the pressure drop across the element reaches 0.35MPa and by-pass valve will automatically open at 0.4MPa. Element is easy to be replaced from filter.