



HF系列微型高压软管接头总成

HF MINI HIGH PRESSURE HOSE AND ADAPTER ASSEMBLY SERIES

(一)型号说明 MODEL CODE

微型高压软管接头总成

Mini high pressure hose adapter assembly

一端接头连接形式 Connecting type of one end

J: 铰接式 Adjustable fitting
O: 锥面密封式 Cone seal fitting
H: 快换式 Quick fitting
P: 直接接压力表 Direct connect to pressure gauge
K: 卡套式 Tube jam fitting
G: 固定螺纹式 Fixed thread
E: 外螺纹式 Outer thread
PA: 直接接压力表 (90度) Direct connect to pressure gauge(90 degree)

一端接头连接螺纹 Connecting Thread of one end

J、K、O型(type)
1:M10 × 1
2:M14 × 1.5
P、PA型(type)
1:M14 × 1.5
2:M20 × 1.5
3:G1/4
4:G1/2
H型(type)
1:M12 × 1.25
2:M16
3:M14 × 1.5
4:M16 × 1.5
G型(type)
1:M12 × 1.25
2:M14 × 1.5
3:M16 × 1.5
E型(type)
1:M14 × 1.5
2:G1/4

HF □ □ - □ □ - □ □ - P - □

软管长度 Length of hose unit:

压力等级 Pressure class:40MPa

公称通径 Nor. Dia.: 3mm

另一端接头连接螺纹 Connecting Thread of another end

J、K、O型(type)
1:M10 × 1
2:M14 × 1.5
P型(type)
1:M14 × 1.5
2:M20 × 1.5
3:G1/4
4:G1/2
H型(type)
1:M12 × 1.25
2:M16
3:M14 × 1.5
4:M16 × 1.5
G型(type)
1:M12 × 1.25
2:M14 × 1.5
3:M16 × 1.5
E型(type)
1:M14 × 1.5
2:G1/4

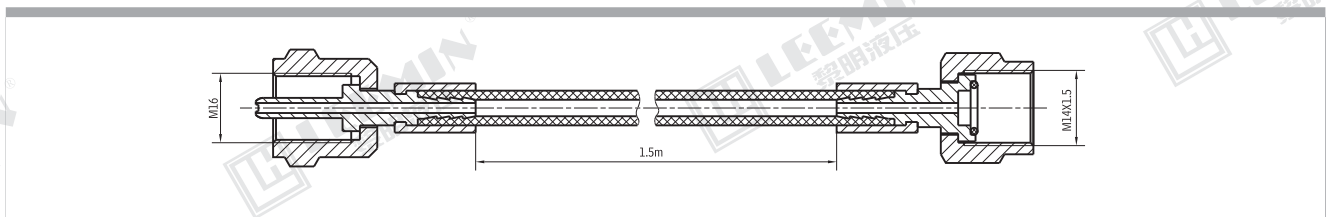
另一端接头连接形式 Connecting type of another end

J: 铰接式 Adjustable fitting
O: 锥面密封式 Cone seal fitting
H: 快换式 Quick fitting
P: 直接接压力表 Direct connect to pressure gauge
K: 卡套式 Tube jam fitting
G: 固定螺纹式 Fixed thread
E: 外螺纹式 Outer thread

(二)型号举例 ORDERING EXAMPLE

- 1、微型高压软管两端可任意选定接头的连接形式。
- 2、用户欲订购一端是快换式接头，其接头螺纹为M16，另一端是直接接压力表，其接口螺纹为M14 × 1.5，通径为3mm，软管长度为1.5m的软管总成，订货型号是：HFH₂-P₁-3-P-1.5。
- 3、订购直接接压力表形式的软管总成时，若用户需要带压力表，则要在订单上说明压力表的量程及表径等。
- 4、软管总成示例图：

- 1、Any connecting type can be select for two ends of the hose.
- 2、For example : One end with quick fitting of connecting thread is M16, The other is direct to connect with pressure gauge. The connecting of thread is M14X1.5, the metre is Dia. 3mm, the length of hose assembly is 1.5M, the model of this is: HFH₂-P₁-3-P-1.5.
- 3、When uses want to order the hose assembly with direct pressure gauge, and you also need the pressure gauge , the pressure range and gauge diameter should be expressed in order.
- 4、Diagram of hose assembly :

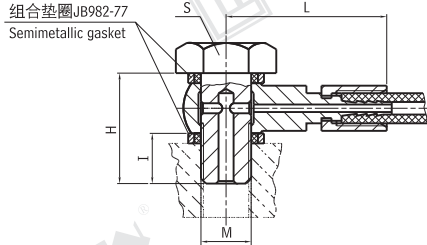




LEEMIN
黎明液压

1、铰接式 Adjustable fitting: HF J ※

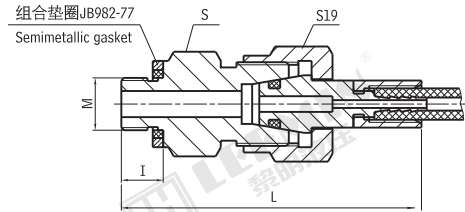
单位 Unit:mm



J※	M	S	I	H	L	组合垫圈 Semimetallic gasket
J1	M10×1	17	10	22	33	10
J2	M14×1.5	19	14	26	40	14

2、锥面密封式 Cone seal fitting: HF 0 ※

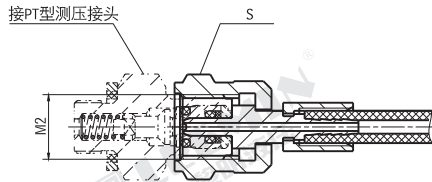
单位 Unit:mm



0※	M	I	L	S	组合垫圈 Semimetallic gasket
01	M10×1	8	54	17	10
02	M14×1.5	12	58	19	14

3、快换式 Quick fitting: HFH ※

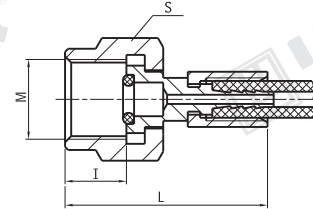
单位 Unit:mm



H※	M ₂	S
H1	M12×1.25	17
H2	M16	19
H3	M14×1.5	17
H4	M16×1.5	19

4、直接接压力表 Direct connect to pressure gauge: HFP ※

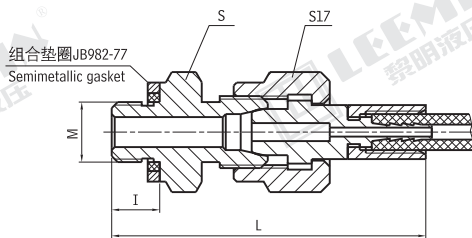
单位 Unit:mm



P※	M	S	L	I
P1	M14×1.5	17	34	10
P2	M20×1.5	24	42	18
P3	G1/4	17	34	10
P4	G1/2	27	35	11

5、卡套式 Tube jam fitting: HFK ※

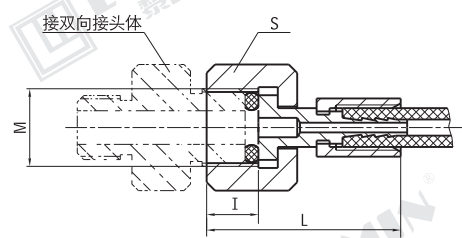
单位 Unit:mm



K※	M	I	L	S	组合垫圈 Semimetallic gasket
K1	M10×1	8	51	17	10
K2	M14×1.5	12	55	19	14

6、外固定螺纹式 Outer fixed thread: HFG ※

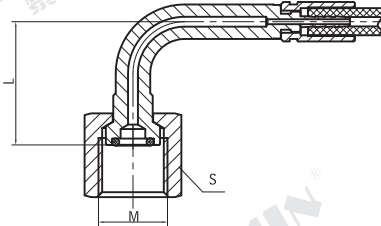
单位 Unit:mm



G※	M	S	I	L
G1	M12×1.25	17	8	31
G2	M14×1.5	17	10	33
G3	M16×1.5	19	10	33

7、PA: 直接接压力表 (90度) HFPA ※
Direct connect to pressure gauge(90 degree)

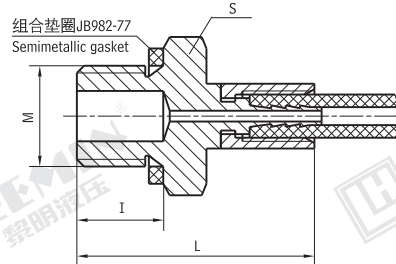
单位 Unit:mm



PA※	PA1	PA2	PA3	PA4
M	M14×1.5	M20×1.5	G1/4	G1/2
S	19	27	19	27
L	25	37.5	25	37.5

8、外螺纹式 Outer thread HFE ※

单位 Unit:mm



E※	M	I	L	S
E1	M14×1.5	12	34	19
E2	G1/4	12	34	19