



高压球阀

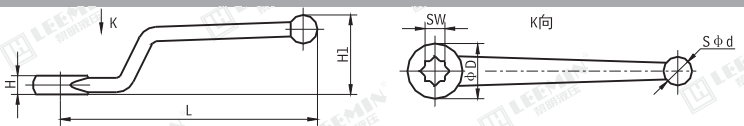
HIGH PRESSURE BALL VALVES

(一)用途及性能规范 APPLICATION AND PERFORMANCE DATA

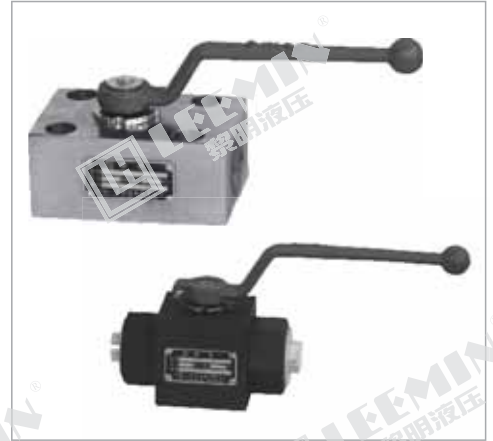
本阀用于工业管道上作介质流动启闭装置。

These ball valves are used as on-off units for starting or stopping medium flow in industrial pipe lines .

(二)手柄

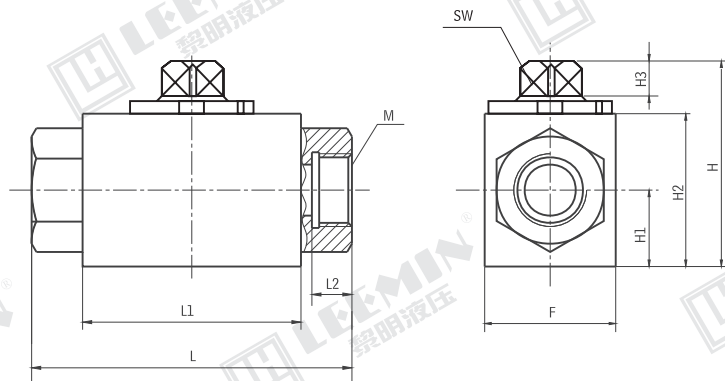
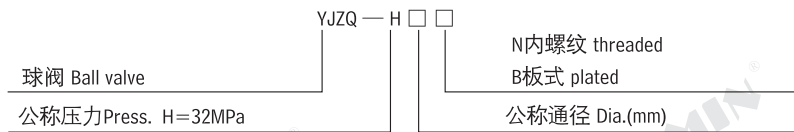


SW	L	H	H1	D	d	螺钉/GB5783-86
9	135	10	40	26	19	M5X8
12	165	12	52	31	21	M5X8
14	181	13	61	33	22	M6X10
17	221	15	75	38	26	M8X12



(三)YJZQ 型球阀 YJZQ MODEL BALL VALVE

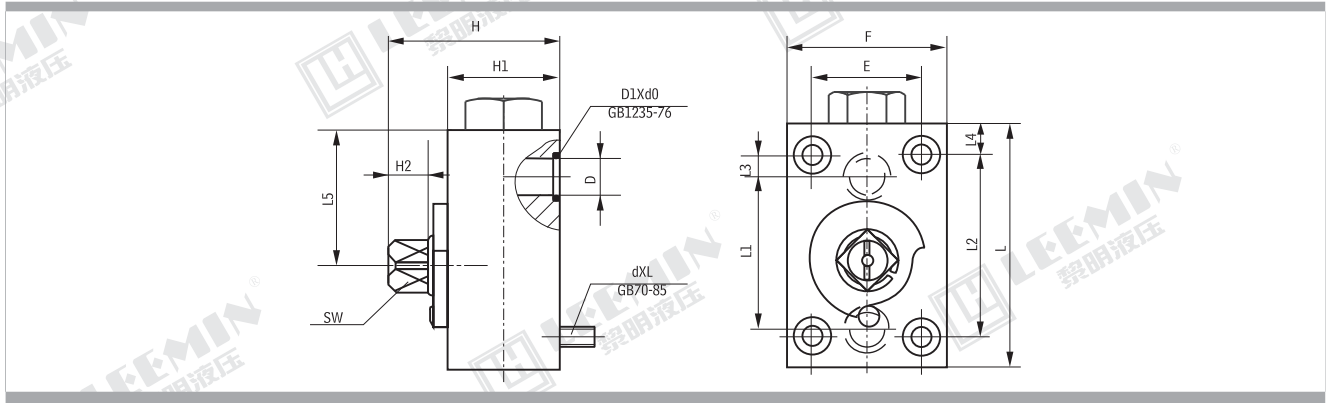
型号说明 MODEL CODE



型号	尺寸Size (mm)									
	M	F	L	L1	L2	H	H1	H2	H3	SW
YJZQ-H10N	M18X1.5	32	79	42	14	52.5	17	40	8	9
YJZQ-H15N	M22X1.5	35	86	48	16	52.5	17	40	8	9
YJZQ-H20N	M27X2	48	108	60	18	75	24	57	12	14
YJZQ-H25N	M33X2	57	116	65	20	82	28.5	64	12	14
YJZQ-H32N	M42X2	68	136	72	22	95.5	34	75	14	17
YJZQ-H40N	M48X2	80	148	80	24	110.5	40	90	14	17
YJZQ-H50N	M64X2	100	180	100	26	130.5	50	100	14	17



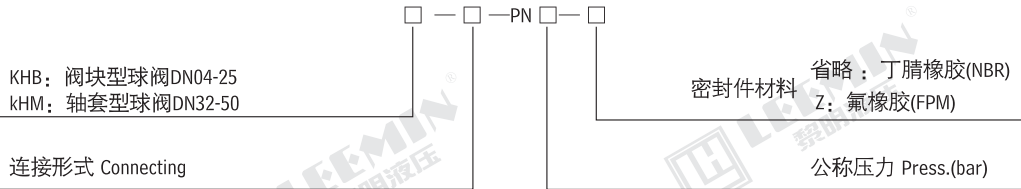
LEEMIN
黎明液压



型号	尺寸Size (mm)														
	E	F	L	L1	L2	L3	L4	L5	H	H1	H2	D	dXL	D1Xd0	SW
YJZQ-H10B	38	54	78	45	60	11	10	45	54	42	8	9.5	M6X40	16X2.4	9
YJZQ-H15B	42	60	88	52	56	6	16	49.5	57	45		13	M8X45	20X2.4	
YJZQ-H20B	50	70	105	60	70	7.5	17.5	57	72	55	11	18	M10X55	30X3.1	12
YJZQ-H25B	55	77	120	72	80	3	25	62.5	78	60	12	22	M10X60	32X3.1	
YJZQ-H32B	75	100	159	99	120	14	21	81.5	96.5	76	14	30	M12X70	40X3.1	14
YJZQ-H40B	90	122	185	112	150	23	18	97	110.5	90		36	M16X90	50X3.1	

(四)高压球阀 KHB/KHM

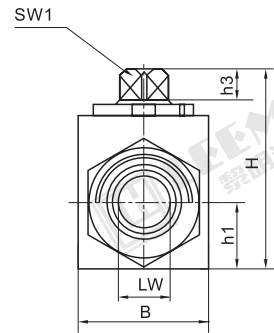
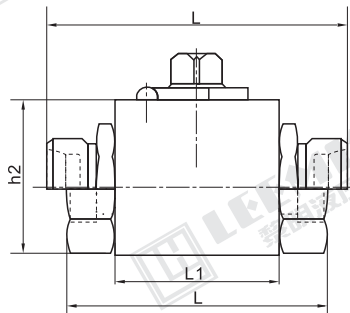
型号代号(订货示例)



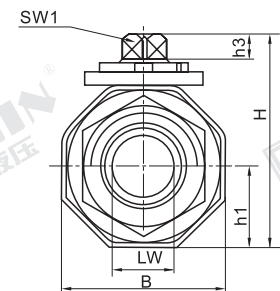
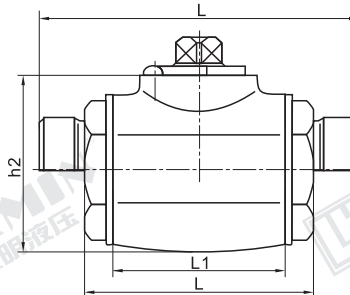
手柄：钢制、曲柄；表面磷化处理

球阀安装尺寸

KHB

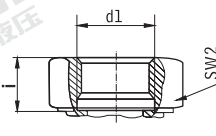
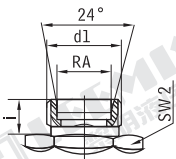
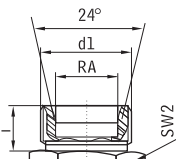
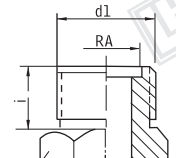


KHM

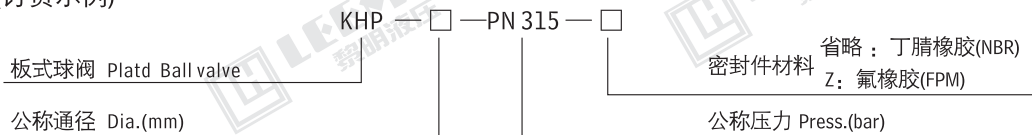




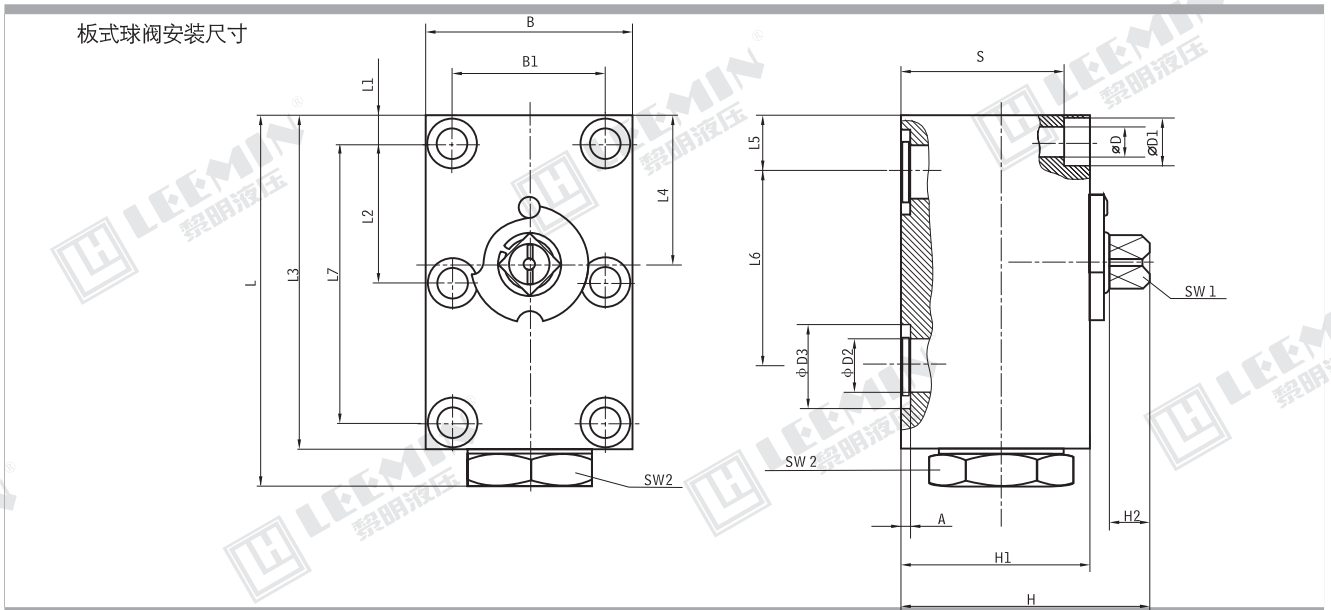
LEEMIN
黎明液压

连接形式 Connection	型号 Model	DN	LW	RA	d1	i	L	L1	B	H	h1	h2	h3	SW1	SW2	
	KHB-G 1/8 -PN500	04	06	-	G1/8	10	69	37	28	44.5	13	32	8	9	22	
	KHB-G 1/4 -PN500	06	06	-	G1/4	14	69	37	28	44.5	13	32	8	9	22	
	KHB-G 3/8 -PN500	10	10	-	G3/8	14	72	42	32	52.5	17	40	8	9	27	
	KHB-G 1/2 -PN400	16	15	-	G1/2	16	83	47	38	63.5	19	46	11	12	32	
	KHB-G 3/4 -PN315	20	20	-	G3/4	18	95	60	48	75	24	57	12	14	41	
	KHB-G1 -PN315	25	25	-	G1	20.5	113	65	57	82	28.5	64	12	14	50	
	KHM-G1 1/4 -PN315	32	30	-	G1 1/4	22	110	84	82	108	41	87.5	14	17	60	
	KHM-G1 1/2 -PN315	40	38	-	G1 1/2	24	130	91	93	119.5	46.5	99	14	17	70	
	KHM-G2 -PN315	50	48	-	G2	26	140	100	110	135.5	55	115	14	17	80	
	KHB-06LR -PN500	04	04	06	M12X1.5	10	67	37	28	44.5	13	32	8	9	22	
	KHB-08LR -PN500	06	06	08	M14X1.5	10	67	37	28	44.5	13	32	8	9	22	
	KHB-10LR -PN500	08	08	10	M16X1.5	11	74	42	32	52.5	17	40	8	9	27	
	KHB-12LR -PN500	10	10	12	M18X1.5	11	74	42	32	52.5	17	40	8	9	27	
	KHB-15LR -PN400	13	13	15	M22X1.5	12	82	47	38	63.5	19	46	11	12	32	
	KHB-18LR -PN400	16	15	18	M26X1.5	12	82	47	38	63.5	19	46	11	12	32	
	KHB-22LR -PN315	20	19	22	M30X2	14	101	60	48	75	24	57	12	14	41	
	KHB-28LR -PN315	25	25	28	M36X2	14	108	65	57	82	28.5	64	12	14	50	
	KHM-35LR -PN315	32	30	35	M45X2	16	141	84	82	108	41	87.5	14	17	60	
	KHM-42LR -PN315	40	38	42	M52X2	16	162	91	93	119.5	46.5	99	14	17	70	
	KHB-08SR -PN500	04	05	08	M16X1.5	12	73	37	28	44.5	13	32	8	9	22	
	KHB-10SR -PN500	06	06	10	M18X1.5	12	73	37	28	44.5	13	32	8	9	22	
	KHB-12SR -PN500	08	08	12	M20X1.5	12	76	42	32	52.5	17	40	8	9	27	
	KHB-14SR -PN500	10	10	14	M22X1.5	14	80	42	32	52.5	17	40	8	9	27	
	KHB-16SR -PN400	13	13	16	M24X1.5	14	86	47	38	63.5	19	46	11	12	32	
	KHB-20SR -PN400	16	15	20	M30X2	16	90	47	38	63.5	19	46	11	12	32	
	KHB-25SR -PN315	20	20	25	M36X2	18	109	60	48	75	24	57	12	14	41	
	KHB-30SR -PN315	25	25	30	M42X2	20	120	65	57	82	28.5	64	12	14	50	
	KHM-38SR -PN315	32	30	38	M52X2	22	153	84	82	108	41	87.5	14	17	60	
		KHB-M12X1.25 -PN500	04	04	8	M12X1.25	09	61	37	28	44.5	13	32	8	9	22
		KHB-M16X1.5 -PN500	06	06	11	M16X1.5	11	69	37	28	44.5	13	32	8	9	22
		KHB-M22X1.5 -PN500	08	08	16	M22X1.5	12	76	42	32	52.5	17	40	8	9	27
		KHB-M27X1.5 -PN500	10	10	20	M27X1.5	12	76	42	32	52.5	17	40	8	9	30
		KHB-M30X1.5 -PN400	16	15	24	M30X1.5	13	84	47	38	63.5	19	46	11	12	32
KHB-M36X2 -PN315		20	20	30	M36X2	15	103	60	48	75	24	57	12	14	41	
KHB-M42X2 -PN315		25	25	35	M42X2	18	116	65	57	82	28.5	64	12	14	50	
KHM-M52X2 -PN315		32	30	40	M52X2	20	149	84	82	108	41	87.5	14	17	60	
KHM-M60X2 -PN315	40	38	50	M60X2	22	174	91	93	119.5	46.5	99	14	17	70		

型号代号(订货示例)



手柄：钢制、曲柄；表面磷化处理



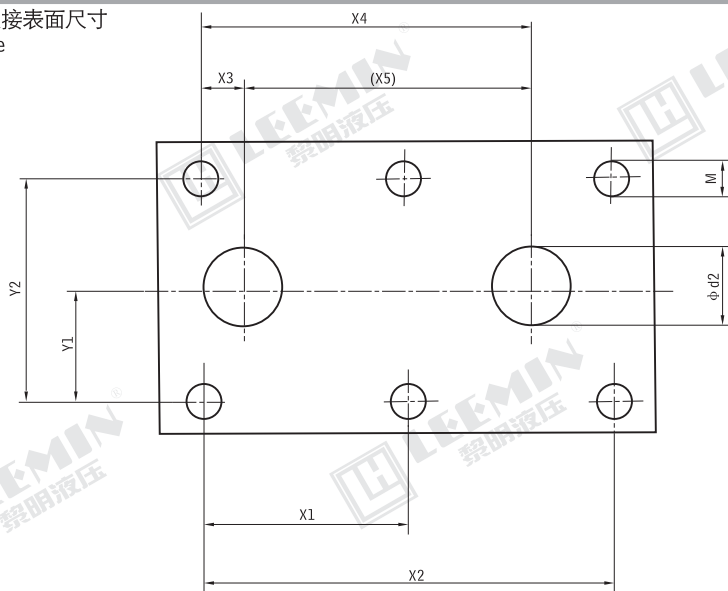


型号/公称口径 Model/Dia.	DN	LW	L	L1	L2	L3	L4	L5	L6	L7	B	B1
KHP-06	6	6	64	8.5	/	59	25	8.5	35	35	40	27
KHP-10	10	9.5	80	8	27.5	71	29.5	10.5	44	55	56	40
KHP-16	16	16	110	8.5	41.5	100	43.5	17	58	83	62	45
KHP-20	20	20	127	10	48.5	117	51	20	69	97	70	51
KHP-25	25	25	145	10	57.5	135	62	24	81	115	80	60
KHP-32	32	30	177	12	68	165	75	29	96	136	100	78
KHP-40	40	38	192	28.5	56	180	85.5	28.5	112	112	130	95
KHP-50	50	48	245	38	68	220	106	38	136	136	149	112

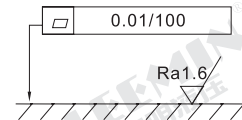
型号/公称口径 Model/Dia.	SW1	SW2	H	H1	H2	D	D1	D2	D3	A	S	O形圈 O'ring
KHP-06	9	22	39	30	6	6.6	11	6	12	1.4	23	12X1.9
KHP-10	9	30	54.5	42	8	9	13.5	9.5	16	1.8	33	16X2.4
KHP-16	12	36	67.5	50	11	9	13.5	16	25	1.8	41	25X2.4
KHP-20	14	41	80	62	12	10.5	16.5	20	30	2.4	51	30X3.1
KHP-25	14	50	86	67	12	10.5	16.5	25	35	2.4	56	35X3.1
KHP-32	17	65	110	90	14	13	19	32	40	2.4	77	40X3.1
KHP-40	17	75	120	100	14	17.5	26	38	50	2.4	82	50X3.1
KHP-50	17	75	130	110	14	22	33	48	60	2.4	88	60X3.1

型号/公称口径 Model/Dia.	螺栓 Thread DIN912	扭矩MA(Nm) 磨擦系数为 μ 0.14时的标准值
KHP-06	M6-10.9	13
KHP-10	M8-10.9	30
KHP-16	M8-12.9	35
KHP-20	M10-12.9	60
KHP-25	M10-12.9	60
KHP-32	M12-12.9	110
KHP-40	M16-12.9	300
KHP-50	M20-12.9	600

板式球阀的连接表面尺寸
Connection size



要求接触面的表面质量



自由公差 ISO 2768

型号/公称口径	Y1	Y2	X1	X2	X3	X4	X5	d2	M
KHP-06	13.5	27	/	35	0	35	35	6	M6
KHP-10	20	40	27.5	55	2.5	46.5	44	9.5	M8
KHP-16	22.5	45	41.5	83	8.5	66.5	58	16	M8
KHP-20	25.5	51	48.5	97	10	79	69	20	M10
KHP-25	30	60	57.5	115	14	95	81	23.5	M10
KHP-32	39	78	68	136	17	113	96	32	M12
KHP-40	47.5	95	56	112	0	112	112	38	M16
KHP-50	56	112	68	136	0	136	136	47	M20

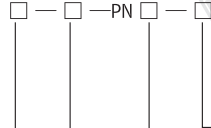


LEEMIN
黎明液压

型号代号(订货示例)

KHBF: 阀块型球阀DN 16-25
KHMF: 轴套型球阀DN 32-50(长形)

公称通径 Dia.(mm)



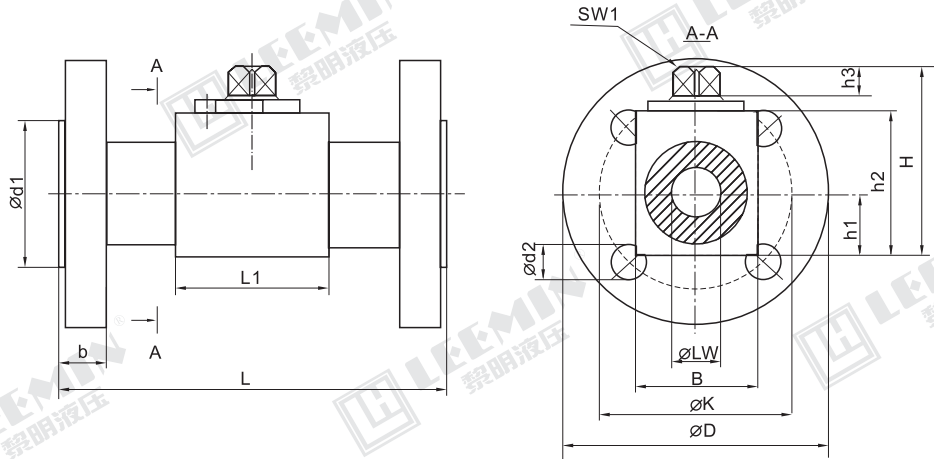
密封件材料
省略: 丁腈橡胶(NBR)
Z: 氟橡胶(FPM)

公称压力 Press.(bar)

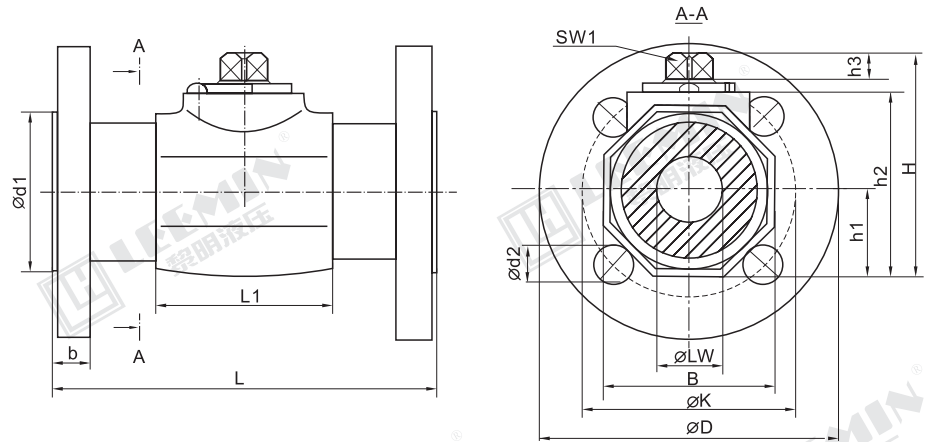
手柄: 钢制、曲柄; 表面磷化处理

球阀安装尺寸

KHBF



KHMF



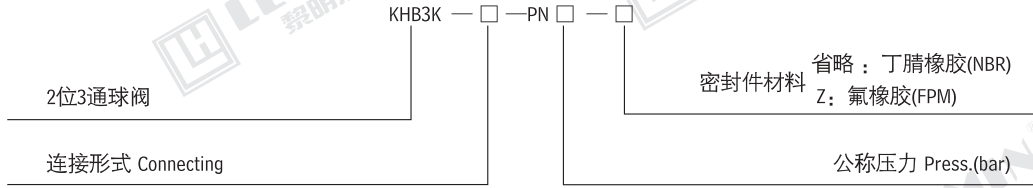
型号 Model	LW	L	L1	D	d1	d2	K	B	b	H	h1	h2	h3	SW1	Z*
KHBF-016 -PN 40	15	130	47	95	45	14	65	38	16	63.5	19	46	11	12	4
KHBF-016 -PN 160	15	130	47	105	45	14	75	38	20	63.5	19	46	11	12	4
KHBF-016 -PN 315	15	130	47	128	45	18	90	38	26	63.5	19	46	11	12	4
KHBF-020 -PN 40	20	150	60	105	55	14	75	48	18	75	24	57	12	14	4
KHBF-025 -PN 40	25	160	65	115	65	14	85	57	18	82	28.5	64	12	14	4
KHBF-025 -PN 160	25	160	65	138	65	18	100	57	24	82	28.5	64	12	14	4
KHBF-025 -PN 250	25	160	65	148	65	22	105	57	28	82	28.5	64	12	14	4
KHBF-025 -PN 315	25	160	65	158	65	22	115	57	34	82	28.5	64	12	14	4
KHMF-040 -PN 40	30	180	84	138	78	18	100	82	18	108	41	87.5	14	17	4
KHMF-032 -PN 160	30	180	84	155	78	22	110	82	26	108	41	87.5	14	17	4
KHMF-040 -PN 40	38	200	91	148	88	18	110	93	18	119.5	46.5	99	14	17	4
KHMF-040 -PN 160	38	200	91	168	88	22	125	93	28	119.5	46.5	99	14	17	4
KHMF-040 -PN 250	38	200	91	185	88	26	135	93	34	119.5	46.5	99	14	17	4
KHMF-040 -PN 315	38	200	91	195	88	26	145	93	38	119.5	46.5	99	14	17	4
KHMF-050 -PN 40	48	230	100	165	102	18	125	110	20	135.5	55	115	14	17	4
KHMF-050 -PN 63	48	230	100	178	102	22	135	110	26	135.5	55	115	14	17	4
KHMF-050 -PN 160	48	230	100	195	102	26	145	110	30	135.5	55	115	14	17	4
KHMF-050 -PN 250	48	230	100	198	102	26	150	110	38	135.5	55	115	14	17	8
KHMF-050 -PN 315	48	230	100	208	102	26	160	110	42	135.5	55	115	14	17	8

Z* = 安装螺栓数目



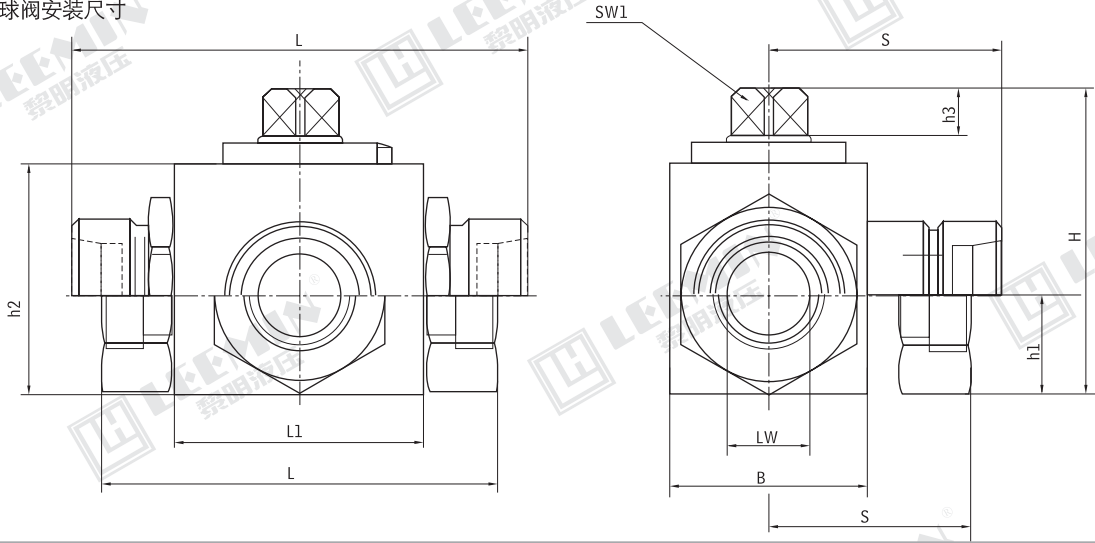
LEEMIN
黎明液压

型号代号(订货示例)



手柄：钢制、曲柄；表面磷化处理

二位三通球阀安装尺寸



连接形式 Connection	型号 Model	DN	LW	RA	d1	i	L	L1	B	H	h1	h2	h3	S	SW1	SW2	
	KHB3K-G1/8-PN315	04	06	-	G1/8	10	69	37	28	44.5	13	32	08	35	09	22	
	KHB3K-G1/4-PN315	06	06	-	G1/4	14	69	37	28	44.5	13	32	08	35	09	22	
	KHB3K-G3/8-PN315	10	10	-	G3/8	14	72	42	32	52.5	17	40	08	36	09	27	
	KHB3K-G1/2-PN315	16	15	-	G1/2	16	83	47	38	63.5	19	46	11	42	12	32	
	KHB3K-G3/4-PN315	20	20	-	G3/4	18	95	60	48	75	24	57	12	49	14	41	
	KHB3K-G1-PN315	25	25	-	G1	20.5	113	65	57	82	28.5	64	12	56.5	14	50	
	KHB3K-06LR-PN315	04	04	06	M12X1.5	10	67	37	28	44.5	13	32	08	34.5	09	22	
	KHB3K-08LR-PN315	06	06	08	M14X1.5	10	67	37	28	44.5	13	32	08	34.5	09	22	
	KHB3K-10LR-PN315	08	08	10	M16X1.5	11	74	42	32	52.5	17	40	08	37	09	27	
	KHB3K-12LR-PN315	10	10	12	M18X1.5	11	74	42	32	52.5	17	40	08	37	09	27	
	KHB3K-15LR-PN315	13	13	15	M22X1.5	12	82	47	38	63.5	19	46	11	40	12	32	
	KHB3K-18LR-PN315	16	15	18	M26X1.5	12	82	47	38	63.5	19	46	11	42	12	32	
	KHB3K-22LR-PN315	20	19	22	M30X2	14	101	60	48	75	24	57	12	52	14	41	
	KHB3K-28LR-PN315	25	25	28	M36X2	14	108	65	57	82	28.5	64	12	54	14	50	
	KHB3K-08SR-PN315	04	05	08	M16X1.5	12	73	37	28	44.5	13	32	08	37	09	22	
	KHB3K-10SR-PN315	06	06	10	M18X1.5	12	73	37	28	44.5	13	32	08	37	09	22	
	KHB3K-12SR-PN315	08	08	12	M20X1.5	12	76	42	32	52.5	17	40	08	38	09	27	
	KHB3K-14SR-PN315	10	10	14	M22X1.5	14	80	42	32	52.5	17	40	08	40	09	27	
	KHB3K-16SR-PN315	13	13	16	M24X1.5	14	86	47	38	63.5	19	46	11	43.5	12	32	
	KHB3K-20SR-PN315	16	15	20	M30X2	16	90	47	38	63.5	19	46	11	45.5	12	32	
	KHB3K-25SR-PN315	20	20	25	M36X2	18	109	60	48	75	24	57	12	56	14	41	
	KHB3K-30SR-PN315	25	25	30	M42X2	20	120	65	57	82	28.5	64	12	60	14	50	
	符合JB984-77标准外螺纹	KHB3K-M12X1.25-PN315	04	04	8	M12X1.25	09	61	37	28	44.5	13	32	08	35	09	22
	KHB3K-M16X1.5-PN315	06	06	11	M16X1.5	11	69	37	28	44.5	13	32	08	35	09	22	
	KHB3K-M22X1.5-PN315	08	08	16	M22X1.5	12	76	42	32	52.5	17	40	08	38	09	27	
	KHB3K-M27X1.5-PN315	10	10	20	M27X1.5	12	76	42	32	52.5	17	40	08	38	09	27	
	KHB3K-M30X1.5-PN315	16	15	24	M30X1.5	13	84	47	38	63.5	19	46	11	42	12	32	
	KHB3K-M36X2-PN315	20	20	30	M36X2	15	103	60	48	75	24	57	12	52	14	41	
	KHB3K-M42X2-PN315	25	25	35	M42X2	18	116	65	57	82	28.5	64	12	58	14	50	
	KHB3K-M52X2-PN315	32	30	40	M52X2	20	149	84	75	104.5	37.5	84	14	72	17	60	
KHB3K-M60X2-PN315	40	38	50	M60X2	22	174	91	85	115.5	42.5	95	14	79.5	17	70		