



(三)技术参数 TECHNICAL DATA

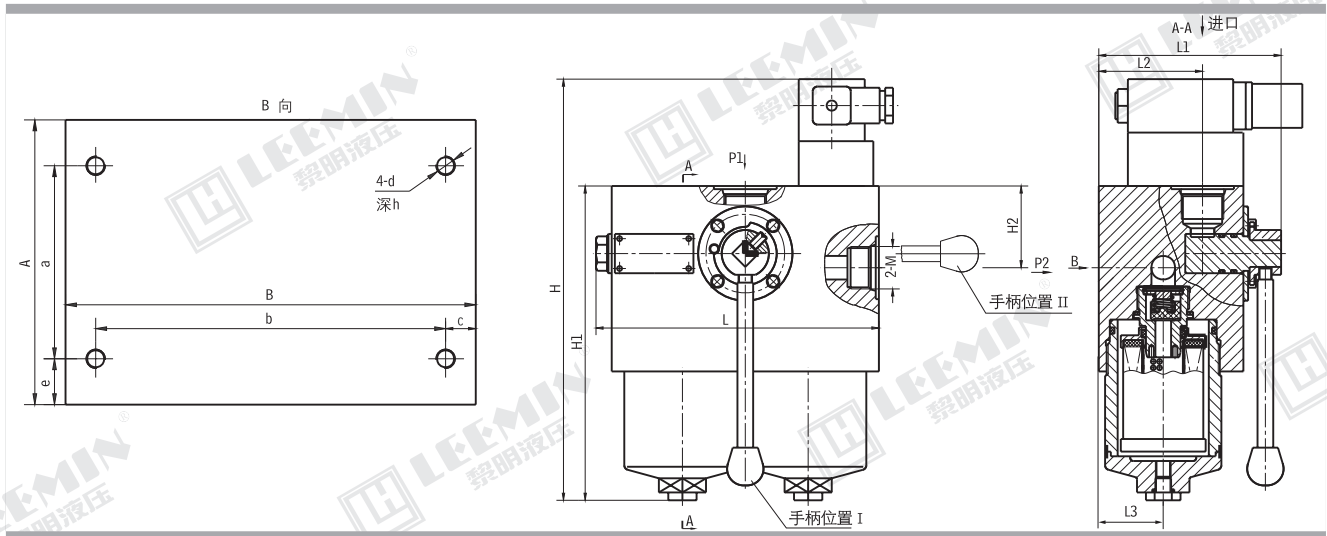
型号 Model	公称流量 Flow rate (L/min)	过滤精度 Filtr. (μ m)	公称压力 Press. (MPa)	通径 Dia. (mm)	压力损失 Pressure loss(MPa)		发讯装置 Indicator	重量 Weight (Kg)	连接方式 Connect	滤芯型号 Model of element
					Initial	Max.				
SMF-D30X*	30	5	10	10	≤ 0.08	0.5	24V/48W 220V/50W		螺纹 Threaded	LH0060D*BN3HC
SMF-D100X*	100	20		25						LH0160D*BN3HC

注: *为过滤精度。若使用介质为水-乙二醇, 使用压力10MPa, 公称流量100L/min, 过滤精度10 μ m, 带发讯器。则过滤器型号为SMF·BH-H100 \times 10C, 滤芯型号为LH0160D010BN3HC.BH

Note: *is represents filtration. If the filter fluid is water-glycol, usage pressure 10MPa, flow rate 100L/min, filtration accuracy 10 μ m and the filter equipped with indicator. The model of the filter is SMF·BH-H100 \times 10C, the model of element is LH0160D010BN3HC.BH

(四)安装尺寸 MOUNTING SIZE

型号 Model	H	H1	H2	L	L1	L2	A	a	B	b	M	d	h	c	e	L3
SMF-D30X*	273	203	52	180	116	66	118	80	170	145	M27X2	M8	10	12.5	19	41
SMF-D100X*	362	292	80	246	163	93.5	166	135	230	190	M33X2	M10	15	20	16	60



SLLF系列双筒润滑过滤器

SLLF DUPLEX LUBRICATION FILTER SERIES

(一)简介

SLLF双筒过滤器是由两只单筒过滤器及二位六通换向阀组成, 结构简单、使用方便, 并带有旁通阀及滤芯污染堵塞发讯器, 以达到保护系统安全的目的。

本过滤器配有永久磁铁, 可滤除油液中1微米以上的铁磁性颗粒。

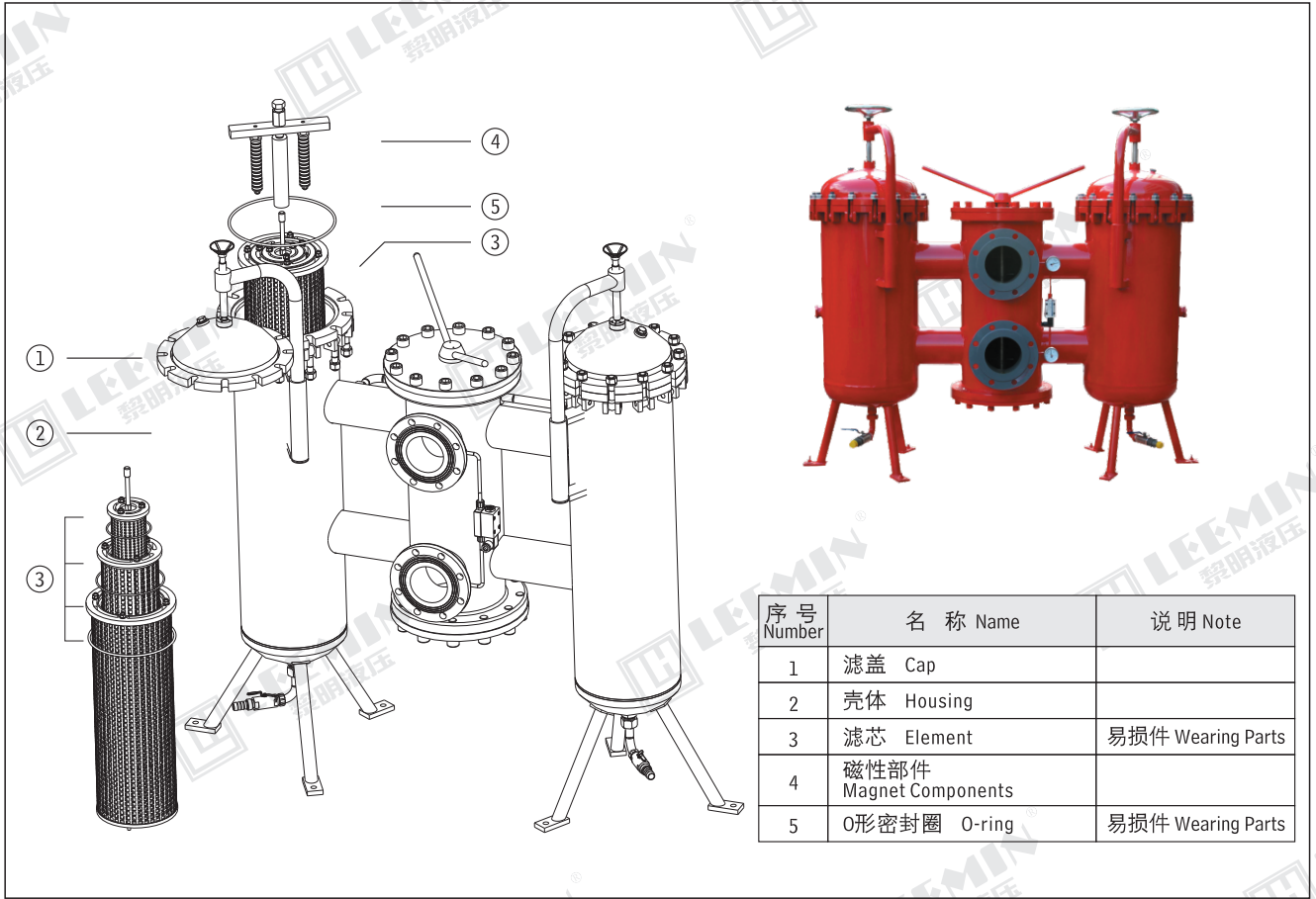
它的特点是当一只过滤器滤芯堵塞需更换或清洗时, 不需要停止主机工作, 只要打开压力平衡阀并转动换向的滤芯, 滤芯为组合型, 使清洗更换滤芯更方便。需更换滤芯侧过滤筒, 允许少量内泄漏。

本过滤器适用于重型机械, 矿山机械, 冶金机械等稀油润滑系统。

INTRODUCTION

SLLF series filter is composed of two single bowl filters and one 2-position 6 way directional valve. It is simple in construction and easy to use. There is a bypass valve and two contamination indicators in it, for protecting the lubricating system safety.

The feature of this filter allows continuous operation even if the clogged element needs replacing for a clean one. After opening the balance valve and then turning the directional valve, the other filter will begin to work in the lubricating system; the clogged element should be changed at that time. This series filter is used in lubricating systems of heavy duty, mining and metallurgical machines.



序号 Number	名称 Name	说明 Note
1	滤盖 Cap	
2	壳体 Housing	
3	滤芯 Element	易损件 Wearing Parts
4	磁性部件 Magnet Components	
5	O形密封圈 O-ring	易损件 Wearing Parts

(二)型号说明 MODEL CODE

SLLF - □ × □ P

双筒润滑过滤器 Duplex lubrication filter

口径 Dia. (mm)

P:带CMS型发讯器 with CMS indicator

省略: 不带发讯器 Omit if without indicator

过滤精度 Filtration accuracy(μm)

(三)技术参数 TECHNICAL DATA

1、过滤器的公称压力 Pressure class: 1.6MPa 2、发讯压差(滤芯清洗压降≤)Indicatr:0.1MPa 3、原始压力损失Initial ΔP≤0.03MPa

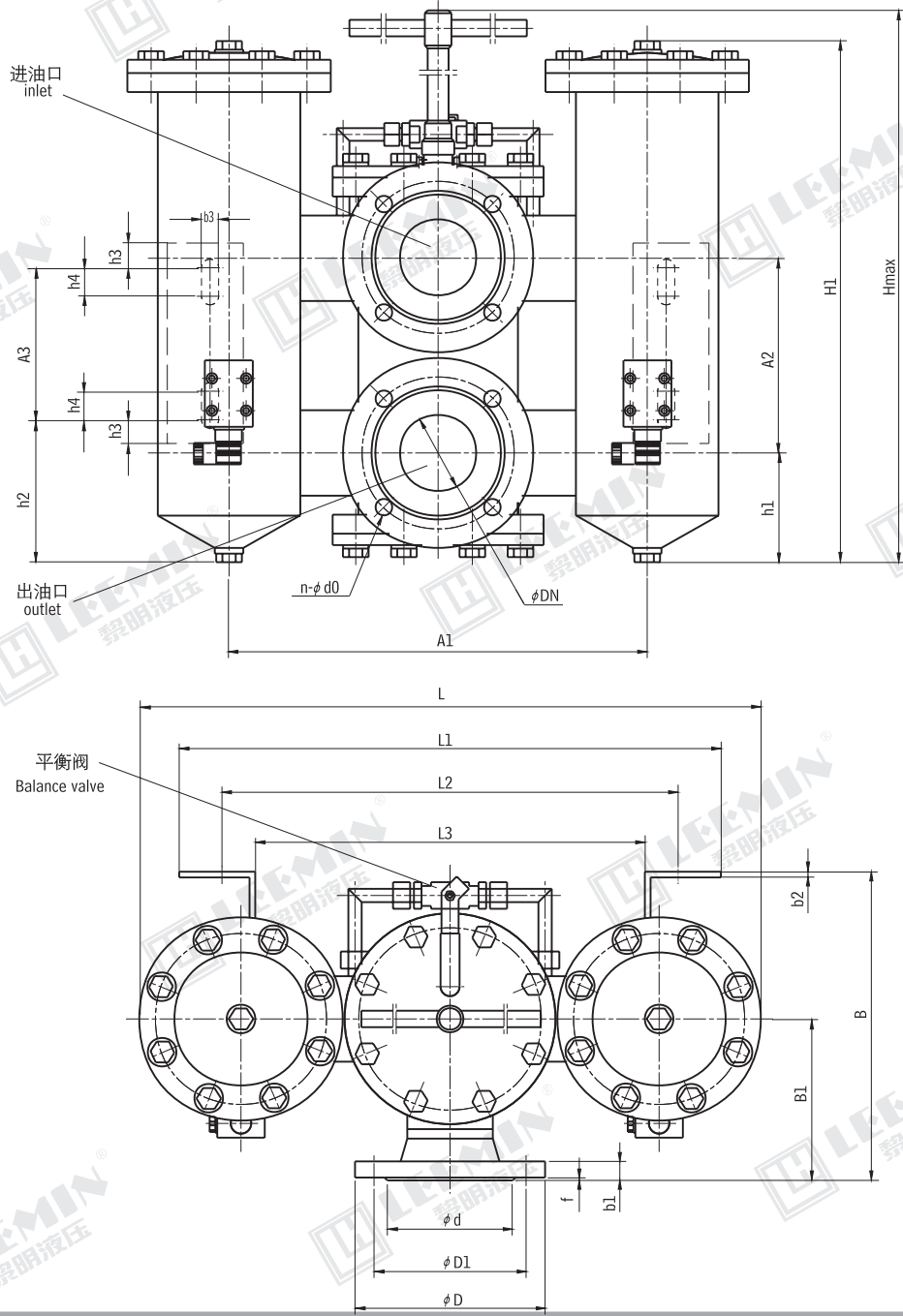
型号 Model	公称 口径 Dia. (mm)	过 滤 面 积 Filter surface (m ²)	运 动 粘 度 等 级 Class of kinematic viscosity										重 量 Weight (Kg)
			N46		N68		N100		N150		N460		
			过 滤 精 度 Filtration accuracy(μm)										
			80	120	80	120	80	120	80	120	80	120	
通 过 能 力 Flow(L/min)													
SLLF-32 × *P	32	0.08	130	310	120	212	63	151	29	69	19	49	55
SLLF-40 × *P	40	0.21	330	790	305	540	160	384	72	175	48	125	85
SLLF-50 × *P	50	0.31	485	1160	447	793	250	565	107	256	69	160	115
SLLF-65 × *P	65	0.52	820	1960	760	1340	400	955	180	434	106	250	152
SLLF-80 × *P	80	0.83	1320	3100	1200	2150	630	1533	288	695	170	400	480
SLLF-100 × *P	100	1.31	1990	4750	1840	3230	1000	2310	436	1050	267	630	630
SLLF-150 × *P	150	3.30	5000	12000	4650	8130	2520	5840	1094	2660	679	1600	870
SLLF-200 × *P	200	6.00	9264	22140	8568	15114	4620	10788	2034	4908	1254	2898	980

注: 如需单筒润滑过滤器资料, 请与我公司技术开发部联系。



LEEMIN
黎明液压

(四)安装外形尺寸 MOUNTING SIZE

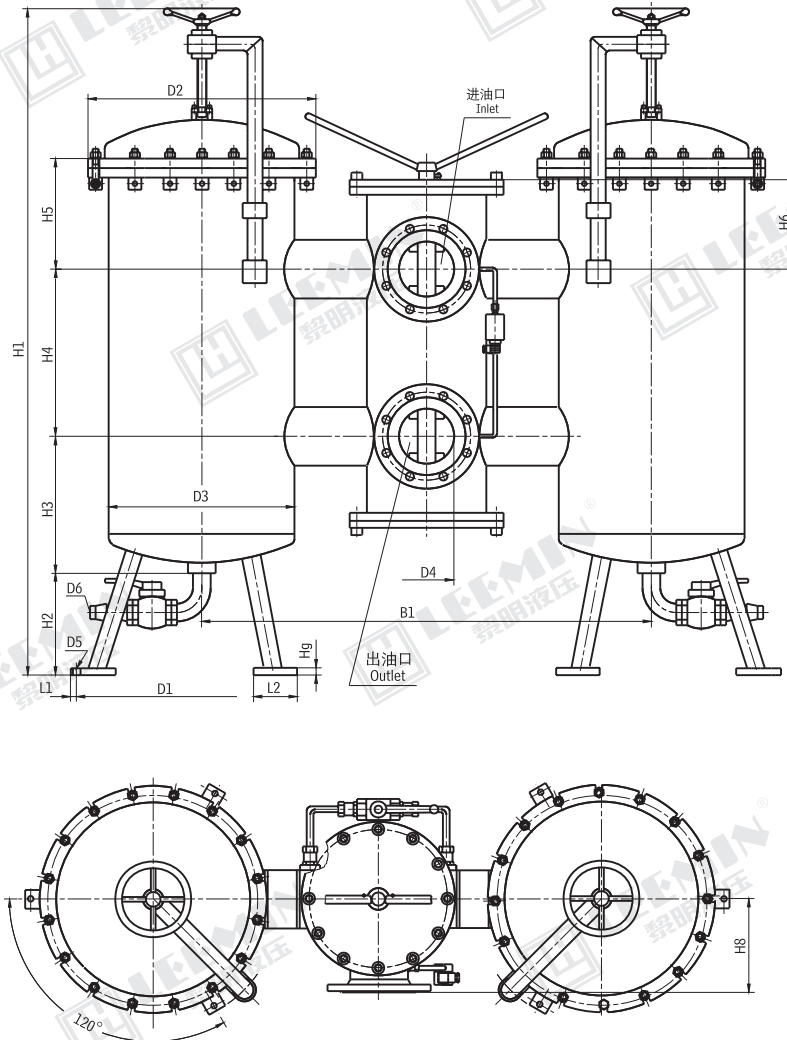


单位Unit:mm

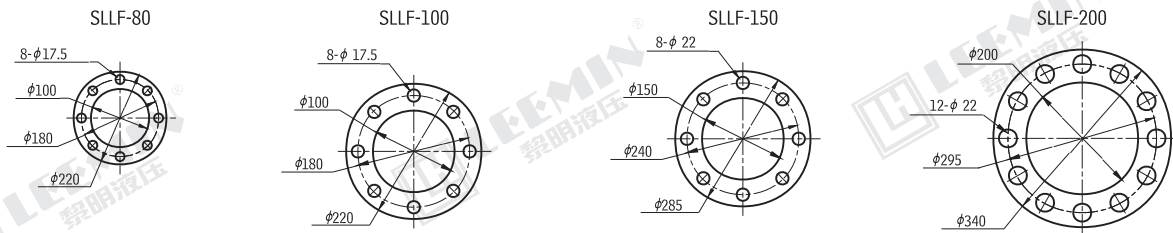
型号 Model	DN	D	D1	d	n	d0	f	b1	A2	h1	B1	B	L1	L2	L3	b2	h2	h3	h4	A3	b3	L	A1	H	H1
SLLF-32 × *P	32	140	100	78	4	17.5	2	16	145	90	130	254	380	340	280	6	90	20	30	120	14	486	310	395	368
SLLF-40 × *P	40	150	110	88	4	17.5	3	16	205	197	170	325	520	480	410	6	172	25	30	160	18	654	440	872	630
SLLF-50 × *P	50	165	125	102	4	17.5	3	18	225	132	190	360	630	560	470	6	130	30	40	300	22	884	520	840	609
SLLF-65 × *P	65	185	145	122	4	17.5	3	18	225	311	190	360	630	560	470	6	309	30	40	300	22	884	520	1019	728



LEEMIN
黎明液压



外接法兰连接尺寸 External connecting flange



单位Unit:mm

型号 Model	B1	D1	D2	D3	D4	D5	D6	H1	H2	H3	H4	H5	H6	H8	H9	L1	L2
SLLF-80 × *P	840	450	340	264	80	14	21	1400	250	390	205	230	100	170	12	20	80
SLLF-100 × *P	900				100			1550		380	225		150	200			
SLLF-150 × *P	1125	555	500	412	150	18	32.4	1600	395	365	225	265	29	100			
SLLF-200 × *P	1280	600	610	516	200	23	1700	435	250	225	325	18	31	110			