



DRLF系列大流量回油过滤器

DRLF LARGE FLOW RATE RETURN LINE FILTER SERIES

(一) 简介

DRLF系列过滤器安装在液压系统回油管路处，用来滤除油液中诸元件磨损的金属粉末及橡胶质等，使流回油箱中的油液保持清洁。

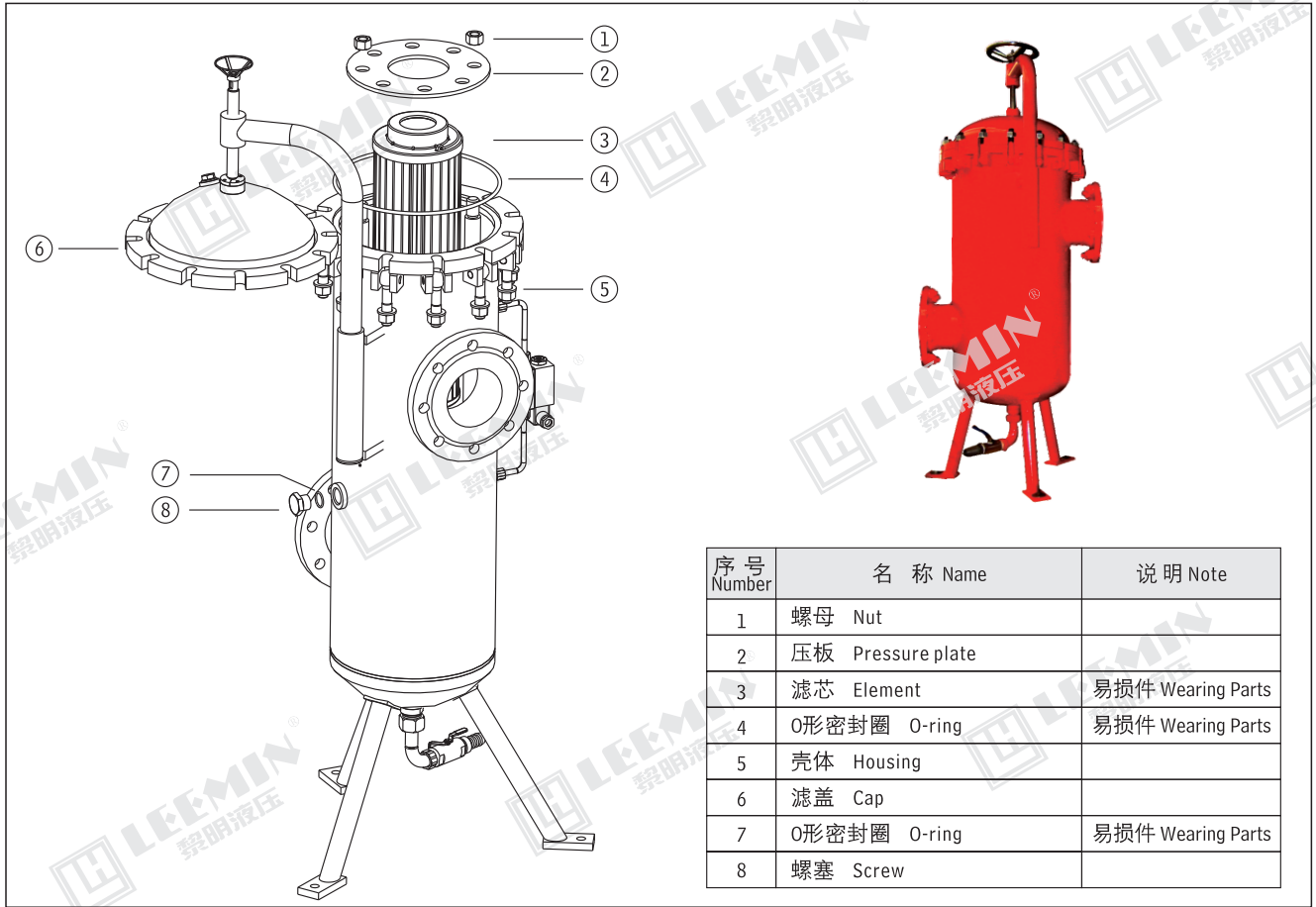
该过滤器的滤芯采用化纤过滤材质，具有过滤精度高、通油能力大、原始压力损失小、纳污量大等优点，并装有压差发讯器及旁通阀。当滤芯堵塞到进出口压差为0.35MPa时，便发出开关信号，此时应清洗或更换滤芯，如不能及时停机或无人来更换滤芯，装在滤芯上部的旁通阀会自动开启，以保护系统。

该过滤器广泛应用于重型机械、矿山机械、冶金机械等的液压系统。

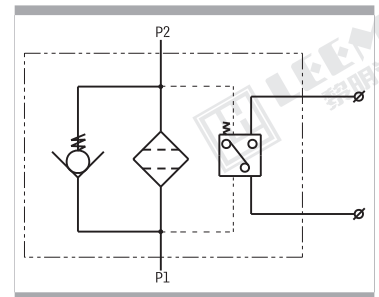
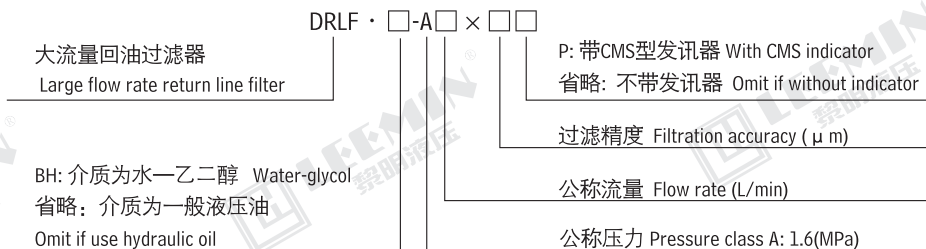
INTRODUCTION

DRLF series filter is used in return line; it can remove all the contaminants from the hydraulic system, keeping the oil back to the tank clean. The element of this series is made of glass fibre; it has high efficiency and filtration, large dirt capacity and lower initial pressure drop. There is a by-pass valve and a contamination indicator. The indicator will act when the pressure drop across filter element attains 0.35MPa. The element should be cleaned or changed in time, if the system cannot be stopped or nobody replaces element, the by-pass valve will open to protect the hydraulic system safety.

This series of filter is widely used in the hydraulic and lubrication system of heavy duty machine、mining machine、metallurgical machine and so on.



(二) 型号说明 MODEL CODE





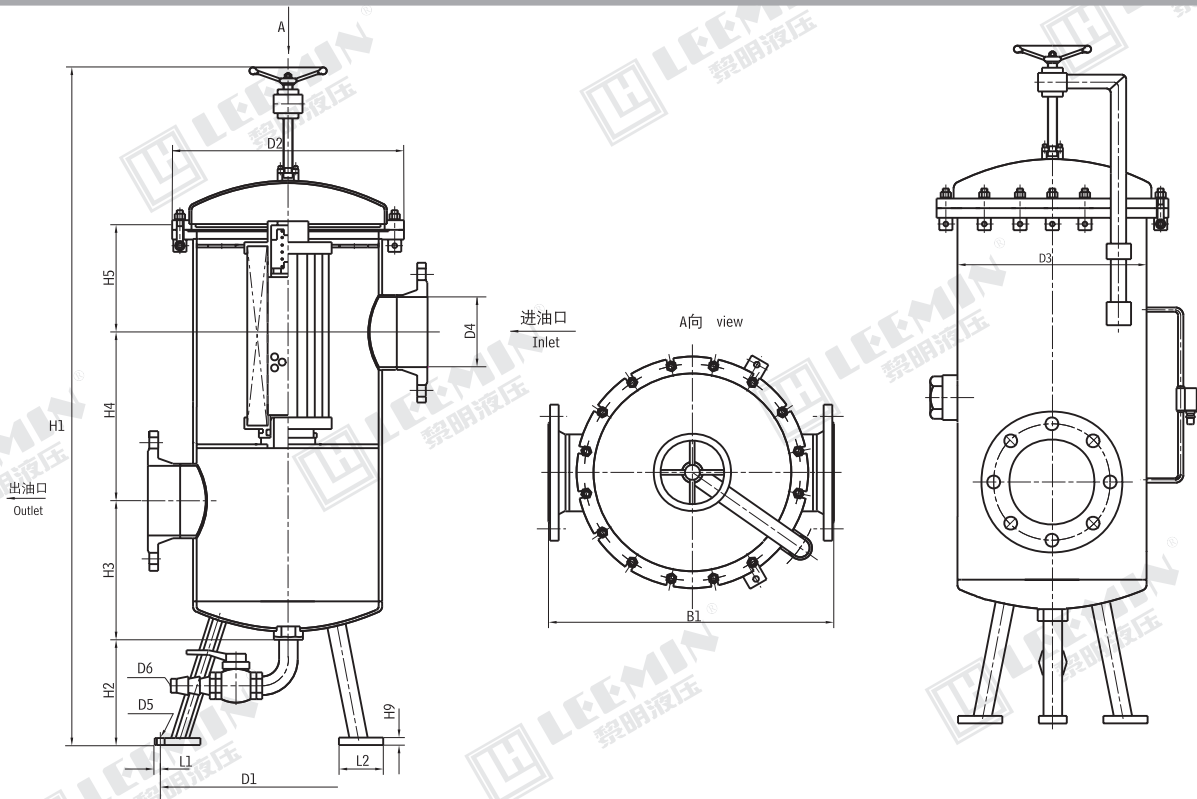
(三) 技术参数 TECHNICAL DATA

型号 Model	通径 Dia. (mm)	公称流量 Flow rate (L/min)	过滤精度 Filtr. (μm)	公称压力 Press. (MPa)	压力损失 Pressure loss(MPa)		旁通阀开启压力 By-pass setting (MPa)	发讯装置功率 Indicator power	重量 Weight (Kg)	滤芯型号 Model of element	滤芯数量 Quantities of elements
					Initial	Max.					
DRLF-A1300 \times P	100	1300	1	1.6	0.1	0.35	0.4	24V/48W 220V/50W	140	SFX-1300 \times *	1
DRLF-A2600 \times P	150	2600	3								2
DRLF-A3900 \times P	200	3900	5								3
DRLF-A6500 \times P	250	6500	10								5
DRLF-A7800 \times P	250	7800	20								6
DRLF-A9100 \times P	250	9100	30								7

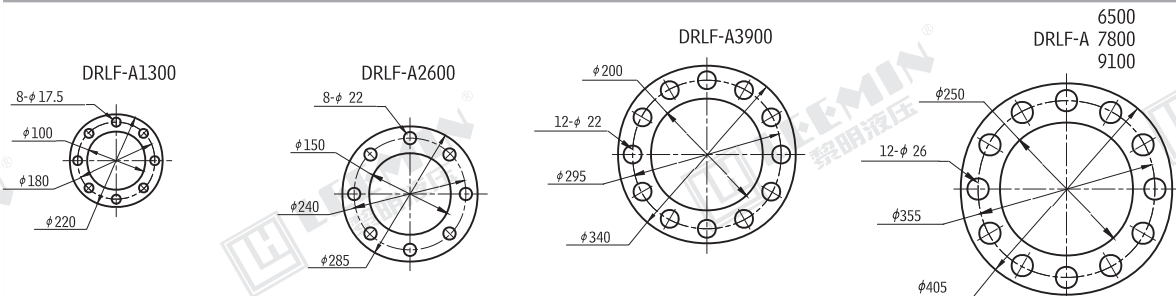
注: *为过滤精度。若使用介质为水-乙二醇, 公称流量2600L/min, 过滤精度10 μm , 带发讯器。则过滤器型号为DRLF·BH-A2600 \times 10P, 滤芯型号为SFX·BH-1300X10。

Note: *is represents filtration. If the filter fluid is water-glycol, flow rate 2600L/min, filtration accuracy 10 μm and the filter equipped and CMS indicator. The model of the filter is DRLF·BH-H2600 \times 10P, the model of element is SFX·BH-1300X10

(四) 安装外形尺寸 MOUNTING SIZE



外接法兰连接尺寸 External connecting flange





LEEMIN
黎明液压

型号 Model	尺寸 Size(mm)																	滤芯 总数
	B1	D1	D2	D3	D4	D5	D6	H1	H2	H3	H4	H5	H6	H8	H9	L1	L2	
DRLF-A1300 × *P	502	450	340	264	100	14	21	1400	250	230			150	200		20	80	1
DRLF-A2600 × *P	602	555	500	412	150	18	32.4	1480	250	275	365	230	225	260	12	29	100	2
DRLF-A3900 × *P					200													3
DRLF-A6500 × *P	754	600	610	516	250	23	1700	250	350	450	250	270	325	18	31	110	5	
DRLF-A7800 × *P																	6	
DRLF-A9100 × *P																	7	