



DFB 系列高压板式过滤器

DFB PRESSURE FILTER FOR PLATED CONNECTION SERIES

(一) 简介

该高压板式过滤器可直接安装系统的阀块上，用于进一步清除或阻挡由于外界侵入或元件工作时磨损，所产生的杂质。特别适用自动控制系统和伺服系统。它可防止高精度的控制元件和执行元件由于污染而过早磨损或卡死，从而可减少故障，延长元件使用寿命。

该过滤器设有压差发讯器，当滤芯被污染堵塞到进出口压差为0.5MPa时，即发出开关信号，此时应清洗或更换滤芯，此达到保证系统安装的目的。

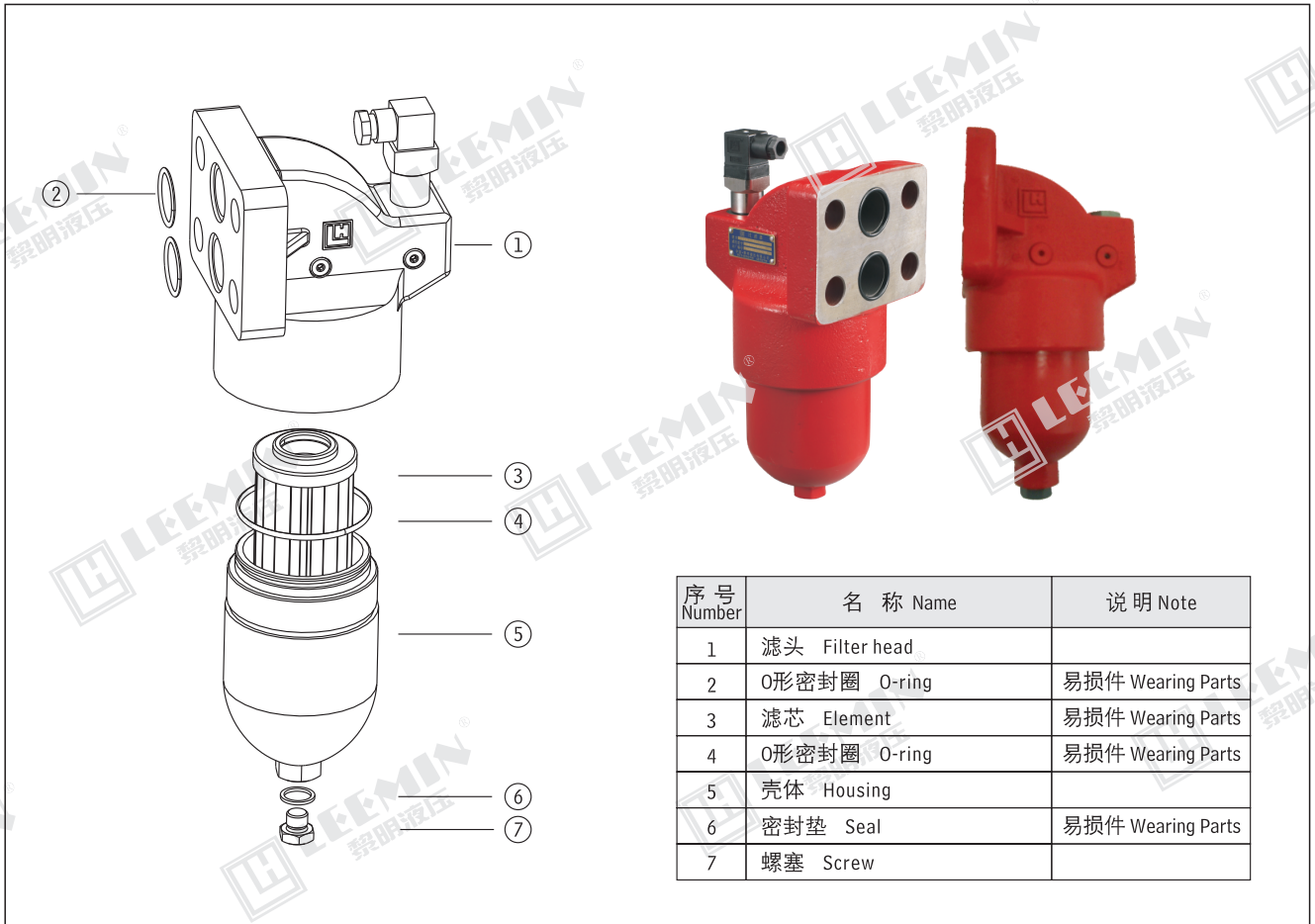
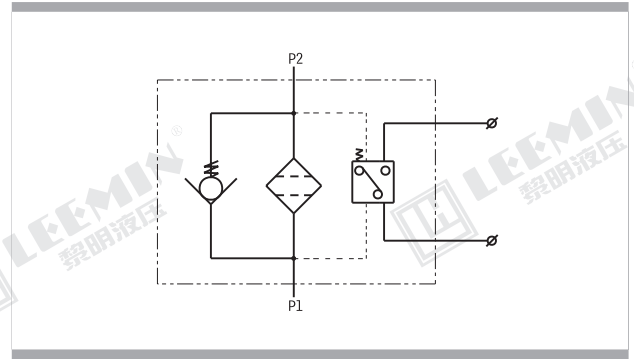
该过滤器与传统过滤器相比具有安装结构紧凑，体积小特点，且滤芯采用进口玻璃纤维滤材，具有过滤精度高，通油能力强，原始压力小，纳污量大等优点。过滤精度以绝对过滤精度标定，其过滤比 β_3 、5、10、20 \geq 200过滤效率 $n \geq 99.5\%$ 。符合ISO标准。

INTRODUCTION

DFB series filter is of high pressure type, and used in the pressure line of hydraulic system. It can remove all the contaminants from the hydraulic system. The element of this series is made of glass fibre. it has high efficiency and

filtration, large dirt capacity and low initial pressure drop. Beta ratio is over 200.

It has two protection equipment which are by-pass valve and contamination indicator. The indicator will act when the pressure drop across element attains adjustable pressure. The element should be cleaned or changed in time.



序号 Number	名称 Name	说明 Note
1	滤头 Filter head	
2	O形密封圈 O-ring	易损件 Wearing Parts
3	滤芯 Element	易损件 Wearing Parts
4	O形密封圈 O-ring	易损件 Wearing Parts
5	壳体 Housing	
6	密封垫 Seal	易损件 Wearing Parts
7	螺塞 Screw	



(二) 型号说明 MODEL CODE

<p>DFB · □ - H □ × □ □</p> <p>高压板式过滤器 Pressure filter for sandwich stacking</p> <p>BH: 介质为水-乙二醇 Water-glycol 省略: 介质为一般液压油 Omit if use hydraulic oil</p> <p>公称压力 Pressure class H: 32MPa</p>	<p>C:带CS-III型压差发讯器 With CS-III indicator 省略: 不带发讯器 Omit if without indicator</p> <p>过滤精度 Filtration accuracy (μm)</p> <p>公称流量 Flow rate (L/min)</p>
---------------------------------------------------------------------------------------------------------------------------------------------------------------------------------------------------------	-----------------------------------------------------------------------------------------------------------------------------------------------------------------------------------

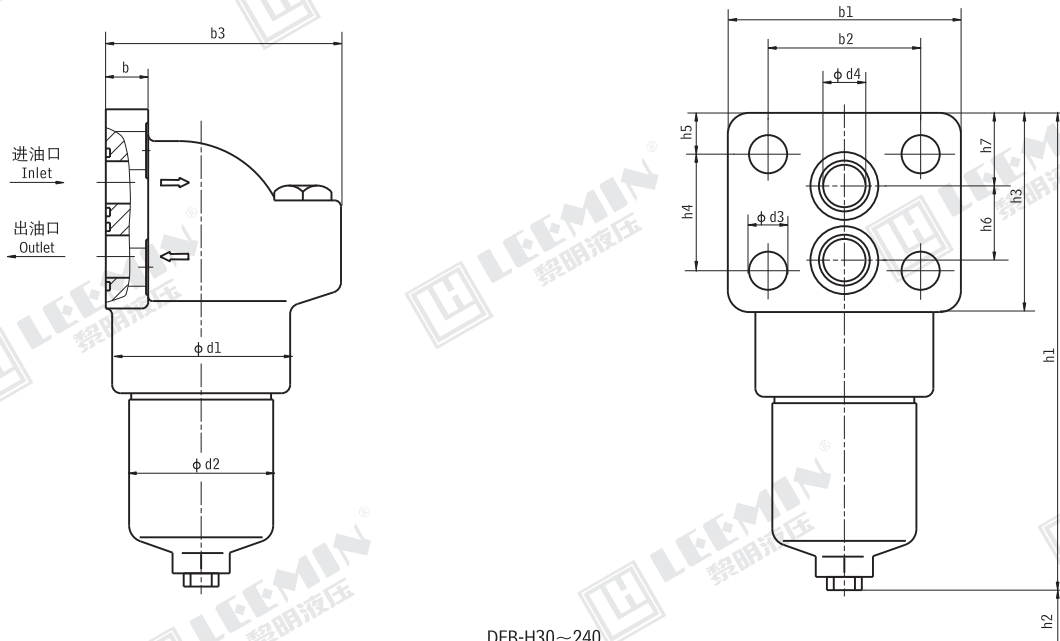
(三) 技术参数 TECHNICAL DATA

型号 Model	通径 Dia. (mm)	公称流量 Flow rate (L/min)	过滤精度 Filtr. (μm)	公称压力 Press. (MPa)	压力损失 Pressure loss (MPa)		发讯器功率 Indicator power (V/W)	滤芯型号 Model of element	进出油口 O形圈 O-ring
					Initial	Max.			
DFB-H30 × *C	16	30	3	32	≤0.1	0.5	220V/50W	LH0030D*BN3HC	24 × 2.4
DFB-H60 × *C	20	60						LH0060D*BN3HC	32 × 3.1
DFB-H110 × *C		110	LH0110D*BN3HC						
DFB-H160 × *C		160	LH0160D*BN3HC						
DFB-H240 × *C	32	240	10					40 × 3.1	
DFB-H330 × *C		330	20						
DFB-H500 × *C		500	30						
DFB-H660 × *C		660							

注: *为过滤精度。若使用介质为水-乙二醇, 使用压力32MPa, 公称流量60L/min, 过滤精度10 μm , 带CS-III发讯器。则过滤器型号为 DFB · BH-H60 × 10C, 滤芯型号为LH0060D010BN3HC.BH

Note: * is filtration accuracy. If the filter fluid is water-glycol, usage pressure 32MPa, flow rate 60L/min, filtration accuracy 10 μm and with CS-III indicator. The model of the filter is DFB · BH-H60 × 10C, the model of element is LH0060D010BN3HC.BH

(四) 安装外形尺寸 MOUNTING SIZE



DFB-H30~240