



高压球阀

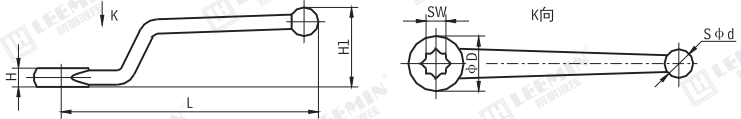
HIGH PRESSURE BALL VALVES

(一)用途及性能规范 APPLICATION AND PERFORMANCE DATA

本阀用于工业管道上作介质流动启闭装置。

These ball valves are used as on-off units for starting or stopping medium flow in industrial pipe lines .

(二)手柄

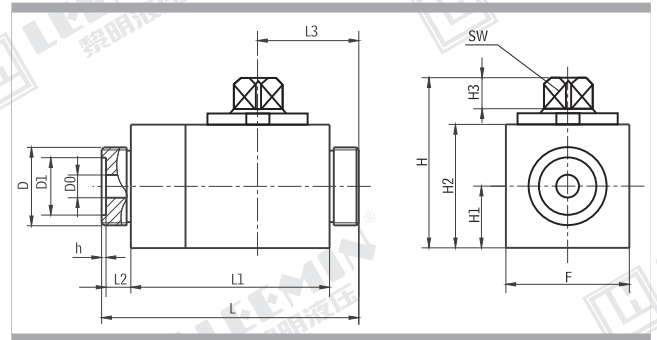


SW	L	H	H1	D	d	螺钉/GB5783-86
9	135	10	40	26	19	M5X8
12	165	12	52	31	21	M5X8
14	181	13	61	33	22	M6X10
17	221	15	75	38	26	M8X12



(三)CJZQ型球阀 CJZQ MODEL BALL VALVES

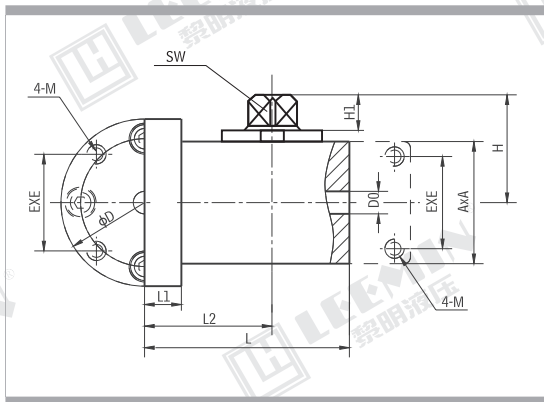
1、型号说明 MODEL CODE



2、连接尺寸 CONNECTION SIZE

型号	尺寸Size (mm)													
	D0	F	L	L1	L2	L3	H	H1	H2	H3	D1	h	SW	M
CJZQ-H6L	6	34	72	48	12	31.5	44.5	17	24	6	11	1.4	9	M16X1.5
CJZQ-H10L	10	52	100	70	15	40.5	65.5	26	52	9	20	1.8		M27X1.5
CJZQ-H15L	13	56	105	73	16	42.5	69.5	28	56	11	24			M30X1.5
CJZQ-H20L	18	65	121	85	18	49	81.5	32.5	65	11	30		2.4	12
CJZQ-H25L	22	68	135	95	20	56	84.5	34	68		35	M42X2		
CJZQ-H32L	30	85	160	116	22	70.6	102.5	42.5	85	12	40	14		14
CJZQ-H40L	36	90	180	120	30	79	107.5	45	90		45		M60X2	
CJZQ-H50L	46	120	206	136	35	96	140	60	120	14	60		17	M72X2

注：外螺纹与焊接式接管、螺母及GB1235-76标准的O形密封圈配套使用，用户需自行配置。



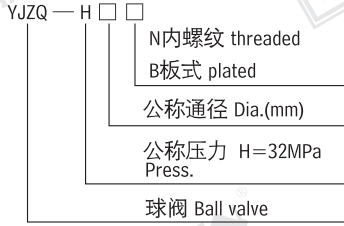
型号	尺寸Size (mm)										
	D0	A	L	L1	L2	D	H	H1	E	M	SW
CJZQ-H10F	10	52	88	22	50.5	68	39.5	9	28.3	M8	9
CJZQ-H15F	13	56	91	23	51.5	74	41.5	9	35.4	M8	9
CJZQ-H20F	18	65	97	25	60	86	49	11	43.8	M10	12
CJZQ-H25F	22	68	111	28	62	92	50.5	11	51.6	M12	12
CJZQ-H32F	30	85	131	30	74.5	113	60	12	60.1	M14	14
CJZQ-H40F	36	90	141	34	80	123	62.5	12	69.3	M16	14
CJZQ-H50F	46	120	171	35	95	156	80	14	83.4	M20	17
CJZQ-H63F	60	142	165	38	96	187	91	14	102.5	M20	17
CJZQ-H80F	70	180	225	40	130	218	116	20	113.1	M24	24
CJZQ-H100F	95	200	260	55	147	260	136	28	140	M30	28



LEEMIN
黎明液压

(四)YJZQ 型球阀 YJZQ MODEL BALL VALVE

型号说明 MODEL CODE

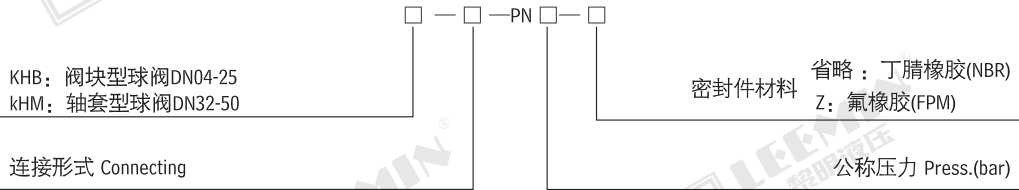


型号	M	尺寸Size (mm)									
		F	L	L1	L2	H	H1	H2	H3	SW	
YJZQ-H10N	M18X1.5	32	79	42	14	52.5	17	40	8	9	
YJZQ-H15N	M22X1.5	35	86	48	16	52.5	17	40	8	9	
YJZQ-H20N	M27X2	48	108	60	18	75	24	57	12	14	
YJZQ-H25N	M33X2	57	116	65	20	82	28.5	64	12	14	
YJZQ-H32N	M42X2	68	136	72	22	95.5	34	75	14	17	
YJZQ-H40N	M48X2	80	148	80	24	110.5	40	90	14	17	
YJZQ-H50N	M64X2	100	180	100	26	130.5	50	100	14	17	

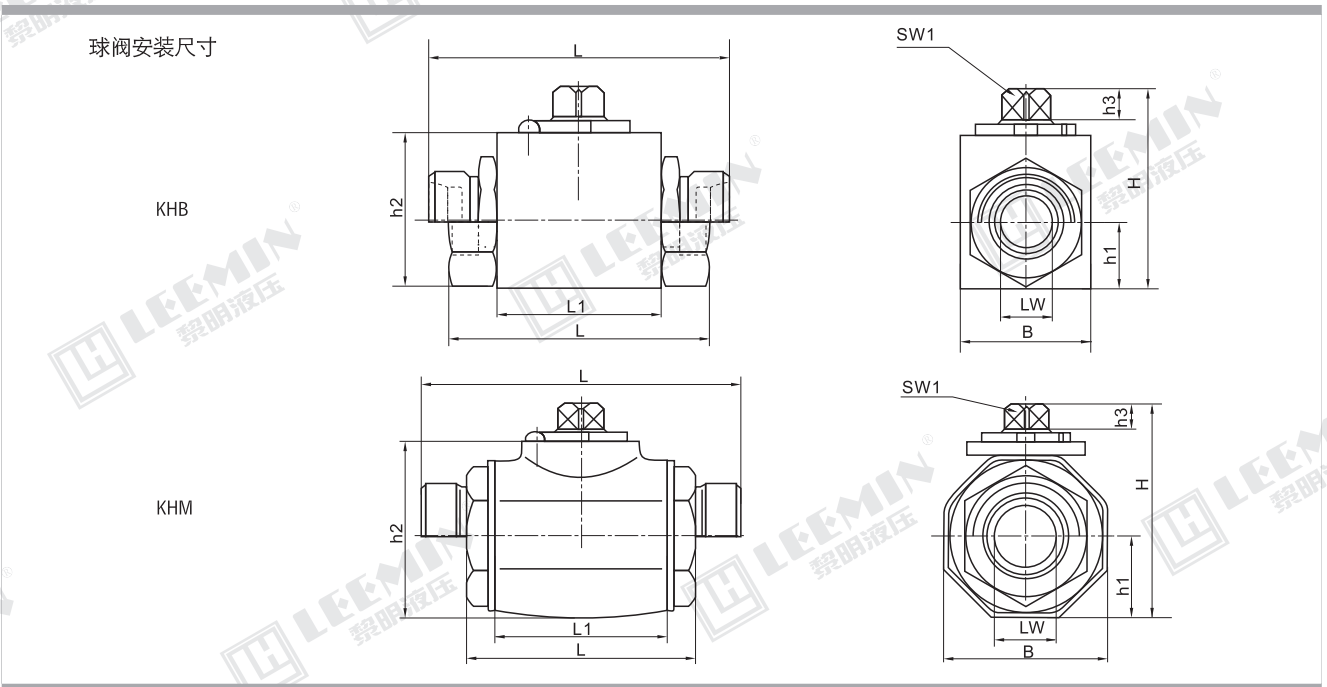
型号	尺寸Size (mm)														
	E	F	L	L1	L2	L3	L4	L5	H	H1	H2	D	dXL	D1Xd0	SW
YJZQ-H10B	38	54	81	45	60	11	13	48.5	56	42	9	10	M6X40	16X2.4	9
YJZQ-H15B	42	60	92	52	56	6	20	54	60	46		13	M8X45	20X2.4	
YJZQ-H20B	50	70	108	60	70	7.5	21.5	61	67	50	11	18	M10X55	25X2.4	12
YJZQ-H25B	55	77	125	72	80	3	30	70	77	60		22	M10X60	32X3.1	
YJZQ-H32B	75	100	161	99	120	14	23	87	89	72	12	30	M12X70	40X3.1	14
YJZQ-H40B	90	122	187	112	150	23	20	99.6	108	90		36	M16X90	50X3.1	

(五)高压球阀 KHB/KHM

型号代号(订货示例)



手柄: 钢制、曲柄; 表面磷化处理

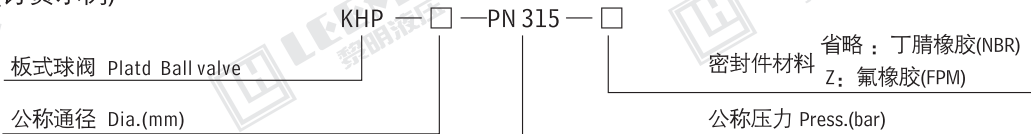




LEEMIN
黎明液压

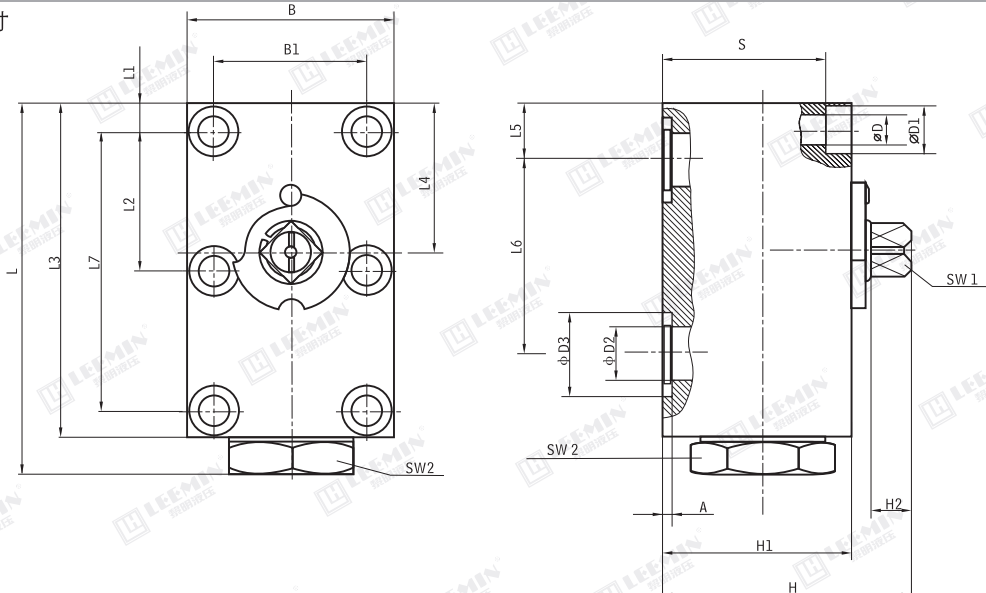
连接形式 Connection	型号 Model	DN	LW	RA	d1	i	L	L1	B	H	h1	h2	h3	SW1	SW2	
	KHB-G 1/8 -PN500	04	06	-	G1/8	10	69	37	28	44.5	13	32	8	9	22	
	KHB-G 1/4 -PN500	06	06	-	G1/4	14	69	37	28	44.5	13	32	8	9	22	
	KHB-G 3/8 -PN500	10	10	-	G3/8	14	72	42	32	52.5	17	40	8	9	27	
	KHB-G 1/2 -PN400	16	15	-	G1/2	16	83	47	38	63.5	19	45	11	12	32	
	KHB-G 3/4 -PN315	20	20	-	G3/4	18	95	60	48	75	24	57	12	14	41	
	KHB-G1 -PN315	25	25	-	G1	20.5	113	65	57	82	28.5	64	12	14	50	
	KHM-G1 1/4-PN315	32	30	-	G1 1/4	22	110	84	75	104.5	37.5	84	14	17	60	
	KHM-G1 1/2-PN315	40	38	-	G1 1/2	24	130	91	85	115.5	42.5	95	14	17	70	
	KHM-G2 -PN315	50	48	-	G2	26	140	100	105	133	52.5	112.5	14	17	80	
	KHB-06LR-PN500	04	04	06	M12X1.5	10	67	37	28	44.5	13	32	8	9	22	
	KHB-08LR-PN500	06	06	08	M14X1.5	10	67	37	28	44.5	13	32	8	9	22	
	KHB-10LR-PN500	08	08	10	M16X1.5	11	74	42	32	52.5	17	40	8	9	27	
	KHB-12LR-PN500	10	10	12	M18X1.5	11	74	42	32	52.5	17	40	8	9	27	
	KHB-15LR-PN400	13	13	15	M22X1.5	12	82	47	38	63.5	19	46	11	12	32	
	KHB-18LR-PN400	16	15	18	M26X1.5	12	82	47	38	63.5	19	46	11	12	32	
	KHB-22LR-PN315	20	19	22	M30X2	14	101	60	48	75	24	57	12	14	41	
	KHB-28LR-PN315	25	25	28	M36X2	14	108	65	57	82	28.5	64	12	14	50	
	KHM-35LR-PN315	32	30	35	M45X2	16	141	84	75	104.5	37.5	84	14	17	60	
	KHM-42LR-PN315	40	38	42	M52X2	16	162	91	85	115.5	42.5	95	14	17	70	
	KHB-08SR-PN500	04	05	08	M14X1.5	12	73	37	28	44.5	13	32	8	9	22	
	KHB-10SR-PN500	06	06	10	M18X1.5	12	73	37	28	44.5	13	32	8	9	22	
	KHB-12SR-PN500	08	08	12	M20X1.5	12	76	42	32	52.5	17	40	8	9	27	
	KHB-14SR-PN500	10	10	14	M22X1.5	14	80	42	32	52.5	17	40	8	9	27	
	KHB-16SR-PN400	13	13	16	M24X1.5	14	86	47	38	63.5	19	46	11	12	32	
	KHB-20SR-PN400	16	15	20	M30X2	16	90	47	38	63.5	19	46	11	12	32	
	KHB-25SR-PN315	20	20	25	M36X2	18	109	60	48	75	24	57	12	14	41	
	KHB-30SR-PN315	25	25	30	M42X2	20	120	65	57	82	28.5	64	12	14	50	
	KHM-38SR-PN315	32	30	38	M52X2	22	153	84	75	104.5	37.5	84	14	17	60	
	符合JB984-77标准外螺纹	KHB-M12X1.25-PN500	04	04	8	M12X1.25	10	61	37	28	44.5	13	32	8	9	22
	KHB-M16X1.5-PN500	06	06	11	M16X1.5	11	69	37	28	44.5	13	32	8	9	22	
	KHB-M22X1.5-PN500	08	08	16	M22X1.5	12	76	42	32	52.5	17	40	8	9	27	
	KHB-M27X1.5-PN500	10	10	20	M27X1.5	12	76	42	32	52.5	17	40	8	9	30	
	KHB-M30X1.5-PN400	16	15	24	M30X1.5	13	84	47	38	63.5	19	46	11	12	32	
	KHB-M36X2-PN315	20	20	30	M36X2	15	103	60	48	75	24	57	12	14	41	
	KHB-M42X2-PN315	25	25	35	M42X2	18	116	65	57	82	28.5	64	12	14	50	
	KHM-M52X2-PN315	32	30	40	M52X2	20	149	84	75	104.5	37.5	84	14	17	60	
	KHM-M60X2-PN315	40	38	50	M60X2	22	174	91	85	115.5	42.5	95	14	17	70	

型号代号(订货示例)



手柄：钢制、曲柄；表面磷化处理

板式球阀安装尺寸





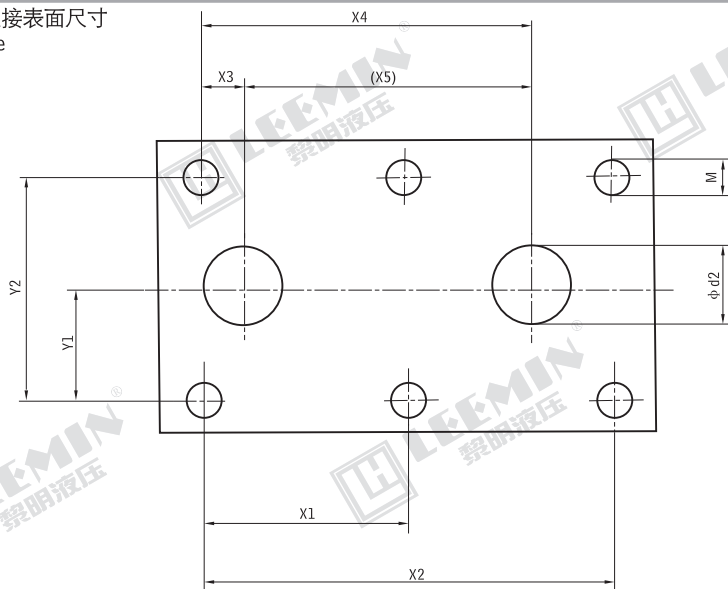
LEEMIN
黎明液压

型号/公称直径 Model/Dia.	DN	LW	L	L1	L2	L3	L4	L5	L6	L7	B	B1
KHP-06	6	6	64	8.5	/	59	25	8.5	35	35	40	27
KHP-10	10	9.5	80	8	27.5	71	29.5	10	44	55	56	40
KHP-16	16	16	110	8.5	41.5	100	43.5	17	58	83	60	45
KHP-20	20	20	127	10	48.5	117	51	20	69	97	70	51
KHP-25	25	25	145	10	57.5	135	62	24	81	115	80	60
KHP-32	32	30	177	12	68	165	75	29	96	136	100	78
KHP-40	40	38	192	28.5	56	180	85	28.5	112	112	130	95
KHP-50	50	48	245	38	68	220	106	38	136	136	149	112

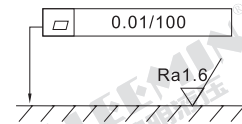
型号/公称直径 Model/Dia.	SW1	SW2	H	H1	H2	D	D1	D2	D3	A	S	O形圈 O'ring
KHP-06	9	22	39	30	6	6.6	11	6	12	1.4	23	12X1.9
KHP-10	9	30	54.5	42	8	9	13.5	9.5	16	1.8	33	16X2.4
KHP-16	12	36	67.5	50	11	9	13.5	16	25	1.8	41	25X2.4
KHP-20	14	41	80	62	12	10.5	16.5	20	30	2.4	51	30X3.1
KHP-25	14	50	86	67	12	10.5	16.5	25	35	2.4	56	35X3.1
KHP-32	17	65	110	90	14	13	19	32	40	2.4	77	40X3.1
KHP-40	17	75	120	100	14	17.5	26	38	50	2.4	82	50X3.1
KHP-50	17	75	130	110	14	22	33	48	56	2.7	88	56X3.5

型号/公称直径 Model/Dia.	螺栓 Thread DIN912	扭矩MA(Nm) 摩擦系数为 μ 0.14时的标准值
KHP-06	M6-10.9	13
KHP-10	M8-10.9	30
KHP-16	M8-12.9	35
KHP-20	M10-12.9	60
KHP-25	M10-12.9	60
KHP-32	M12-12.9	110
KHP-40	M16-12.9	300
KHP-50	M20-12.9	600

板式球阀的连接表面尺寸
Connection size



要求接触面的表面质量



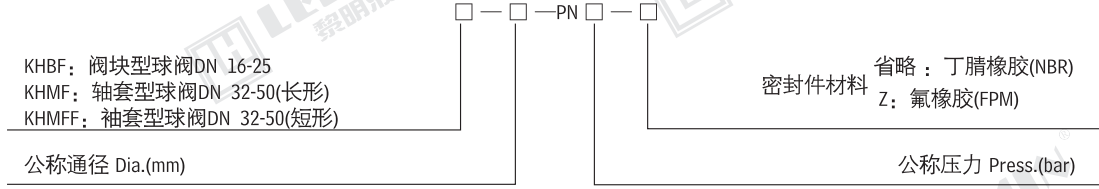
自由公差 ISO 2768

型号/公称直径	Y1	Y2	X1	X2	X3	X4	X5	d2	M
KHP-06	13.5	27	/	35	0	35	35	6	M6
KHP-10	20	40	27.5	55	2.5	46.5	44	9.5	M8
KHP-16	22.5	45	41.5	83	8.5	66.5	58	16	M8
KHP-20	25.5	51	48.5	97	10	79	69	20	M10
KHP-25	30	60	57.5	115	14	95	81	23.5	M10
KHP-32	39	78	68	136	17	113	96	32	M12
KHP-40	47.5	95	56	112	0	112	112	38	M16
KHP-50	56	112	68	136	0	136	136	47	M20



LEEMIN
黎明液压

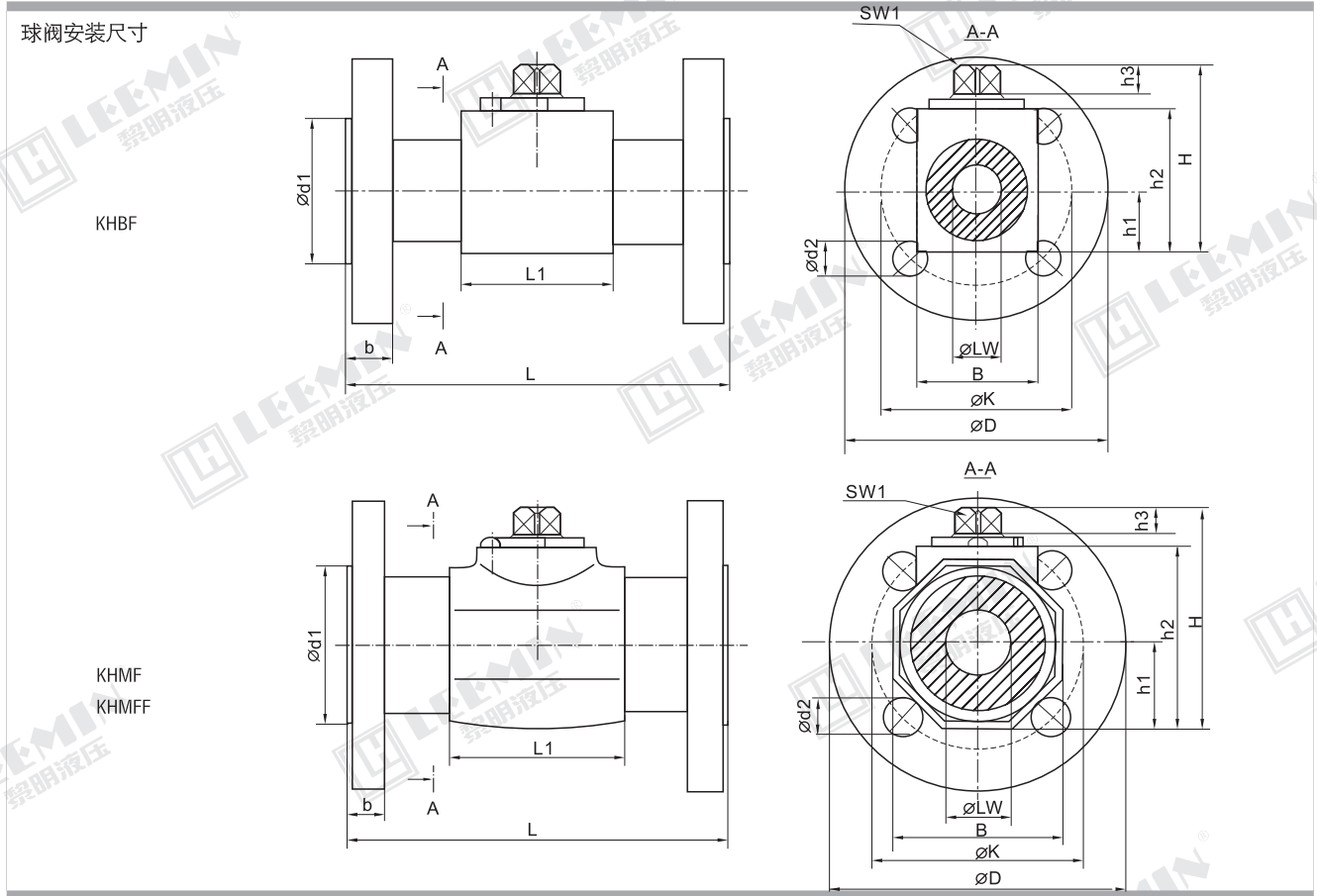
型号代号(订货示例)



KHBF: 阀块型球阀DN 16-25
KHMFF: 轴套型球阀DN 32-50(长形)
KHMFF: 轴套型球阀DN 32-50(短形)

密封件材料 省略: 丁腈橡胶(NBR)
Z: 氟橡胶(FPM)

手柄: 钢制、曲柄; 表面磷化处理



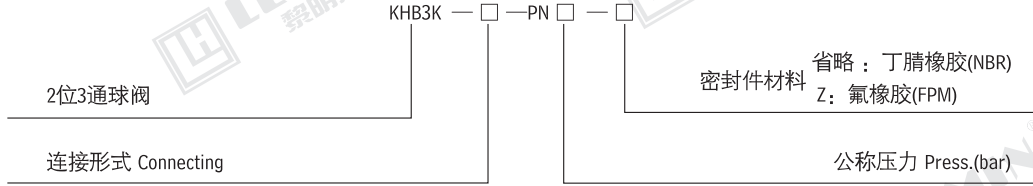
型号 Model	LW	L	L1	D	d1	d2	K	B	b	H	h1	h2	h3	SW1	Z*
KHBF-016 -PN 40	15	130	47	95	45	14	65	38	16	63.5	19	46	11	12	4
KHBF-016 -PN 160	15	130	47	105	45	14	75	38	20	63.5	19	46	11	12	4
KHBF-016 -PN 315	15	130	47	128	45	18	90	38	26	63.5	19	46	11	12	4
KHBF-020 -PN 40	20	150	60	105	55	14	75	48	18	75	24	57	12	14	4
KHBF-025 -PN 40	25	160	65	115	65	14	85	57	18	82	28.5	64	12	14	4
KHBF-025 -PN 160	25	160	65	138	65	18	100	57	24	82	28.5	64	12	14	4
KHBF-025 -PN 250	25	160	65	148	65	22	105	57	28	82	28.5	64	12	14	4
KHBF-025 -PN 315	25	160	65	158	65	22	115	57	34	82	28.5	64	12	14	4
KHMFF-032 -PN 40	30	180	84	138	78	18	100	75	18	104.5	37.5	84	14	17	4
KHMFF-032 -PN 160	30	180	84	155	78	22	110	75	26	104.5	37.5	84	14	17	4
KHMFF-040 -PN 40	38	200	91	148	88	18	110	85	18	115.5	42.5	95	14	17	4
KHMFF-040 -PN 160	38	200	91	168	88	22	125	85	28	115.5	42.5	95	14	17	4
KHMFF-040 -PN 250	38	200	91	185	88	26	135	85	34	115.5	42.5	95	14	17	4
KHMFF-040 -PN 315	38	200	91	195	88	26	145	85	38	115.5	42.5	95	14	17	4
KHMFF-050 -PN 40	48	230	100	165	102	18	125	105	20	133.0	52.5	112.5	14	17	4
KHMFF-050 -PN 63	48	230	100	178	102	22	135	105	26	133.0	52.5	112.5	14	17	4
KHMFF-050 -PN 160	48	230	100	195	102	26	145	105	30	133.0	52.5	112.5	14	17	4
KHMFF-050 -PN 250	48	230	100	198	102	26	150	105	38	133.0	52.5	112.5	14	17	8
KHMFF-050 -PN 315	48	230	100	208	102	26	160	105	42	135.0	52.5	112.5	14	17	8
KHMFF-032-PN 40	30	130	84	138	78	18	100	75	18	104.5	37.5	85	14	17	4
KHMFF-040-PN 40	38	140	91	148	88	18	110	85	18	115.5	42.5	95	14	17	4
KHMFF-050-PN 40	48	150	100	165	102	18	125	105	20	133.0	52.5	112.5	14	17	4

Z*=安装螺栓数目



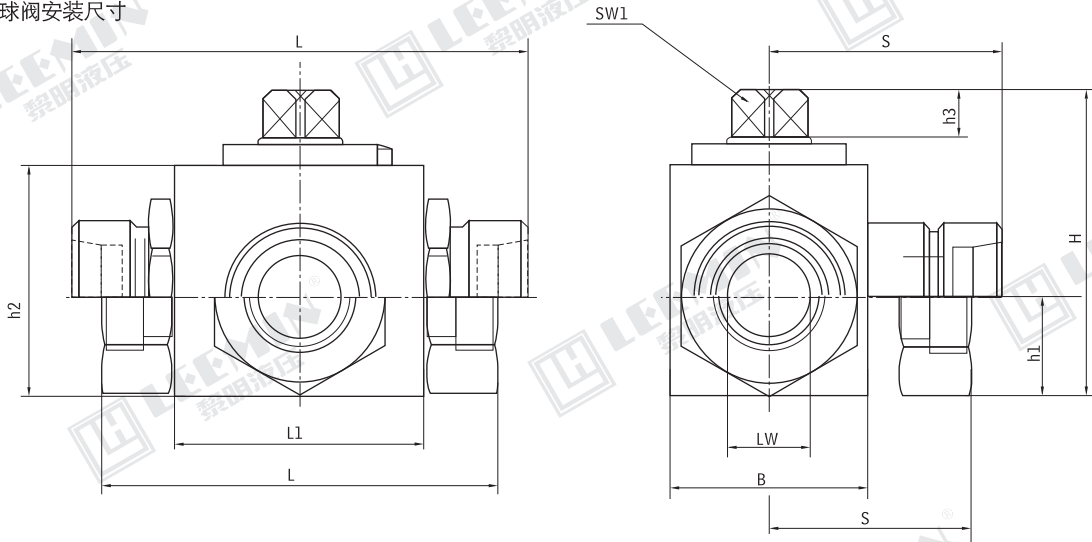
LEEMIN
黎明液压

型号代号(订货示例)



手柄：钢制、曲柄；表面磷化处理

二位三通球阀安装尺寸



连接形式 Connection	型号 Model	DN	LW	RA	d1	i	L	L1	B	H	h1	h2	h3	S	SW1	SW2
	KHB3K-G1/8-PN315	04	06	-	G1/8	10	69	37	28	44.5	13	30	6	35	08	19
	KHB3K-G1/4-PN315	06	06	-	G1/4	14	69	37	28	44.5	13	30	6	35	08	22
	KHB3K-G3/8-PN315	10	10	-	G3/8	14	72	42	32	52.5	17	40	9	36	08	27
	KHB3K-G1/2-PN315	16	15	-	G1/2	16	83	47	38	63.5	19	46	11	42	12	32
	KHB3K-G3/4-PN315	20	20	-	G3/4	18	95	60	48	75	24	57	12	49	14	41
	KHB3K-G1-PN315	25	25	-	G1	20.5	113	65	57	82	28.5	64	12	56.5	14	50
	KHB3K-06LR-PN315	04	04	06	M12X1.5	10	67	37	28	44.5	13	32	6	34.5	08	19
	KHB3K-08LR-PN315	06	06	08	M14X1.5	10	67	37	28	44.5	13	32	6	34.5	08	19
	KHB3K-10LR-PN315	08	08	10	M16X1.5	11	74	42	32	52.5	17	42.5	9	37	08	27
	KHB3K-12LR-PN315	10	10	12	M18X1.5	11	74	42	32	52.5	17	42.5	9	37	08	27
	KHB3K-15LR-PN315	13	13	15	M22X1.5	12	82	47	38	63.5	19	46	11	40	12	32
	KHB3K-18LR-PN315	16	15	18	M26X1.5	12	82	47	38	63.5	19	46	11	42	12	32
	KHB3K-22LR-PN315	20	19	22	M30X2	14	101	60	48	75	24	57	12	52	14	41
	KHB3K-28LR-PN315	25	25	28	M36X2	14	108	65	57	82	28.5	64	12	54	14	50
	KHB3K-08SR-PN315	04	05	08	M16X1.5	12	73	37	28	44.5	13	32	6	37	08	19
	KHB3K-10SR-PN315	06	06	10	M18X1.5	12	73	37	28	44.5	13	32	6	37	08	19
	KHB3K-12SR-PN315	08	08	12	M20X1.5	14	76	42	32	52.5	17	40	9	38	08	27
	KHB3K-14SR-PN315	10	10	14	M22X1.5	14	80	42	32	52.5	17	40	9	40	08	27
	KHB3K-16SR-PN315	13	13	16	M24X1.5	14	86	47	38	63.5	19	46	11	43.5	12	32
	KHB3K-20SR-PN315	16	15	20	M30X2	16	90	47	38	63.5	19	46	11	45.5	12	32
	KHB3K-25SR-PN315	20	20	25	M36X2	18	109	60	48	75	24	57	12	56	14	41
	KHB3K-30SR-PN315	25	25	30	M42X2	20	120	65	57	82	28.5	64	12	60	14	50
符合JB984-77标准外螺纹	KHB3K-M12X1.25-PN315	04	04	8	M12X1.25	10	61	37	28	44.5	13	32	6	35	08	19
	KHB3K-M16X1.5-PN315	06	06	11	M16X1.5	11	69	37	28	44.5	13	32	6	35	08	19
	KHB3K-M22X1.5-PN315	08	08	16	M22X1.5	12	76	42	32	52.5	17	40	9	38	08	27
	KHB3K-M27X1.5-PN315	10	10	20	M27X1.5	12	76	42	32	52.5	17	40	9	38	08	27
	KHB3K-M30X1.5-PN315	16	15	24	M30X1.5	13	84	47	38	63.5	19	46	11	42	12	32
	KHB3K-M36X2-PN315	20	20	30	M36X2	15	103	60	48	75	24	57	12	52	14	41
	KHB3K-M42X2-PN315	25	25	35	M42X2	18	116	65	57	82	28.5	64	12	60	14	50
	KHB3K-M52X2-PN315	32	30	40	M52X2	20	149	84	75	104.5	37.5	84	14	72	17	60
	KHB3K-M60X2-PN315	40	38	50	M60X2	22	174	91	85	115.5	42.5	95	14	79.5	17	70